

PERIMETER  
TOWN CENTER



6105 & 6115 PEACHTREE DUNWOODY RD • 1150 HAMMOND DR  
ATLANTA, GA 30328

Ackerman & Co.

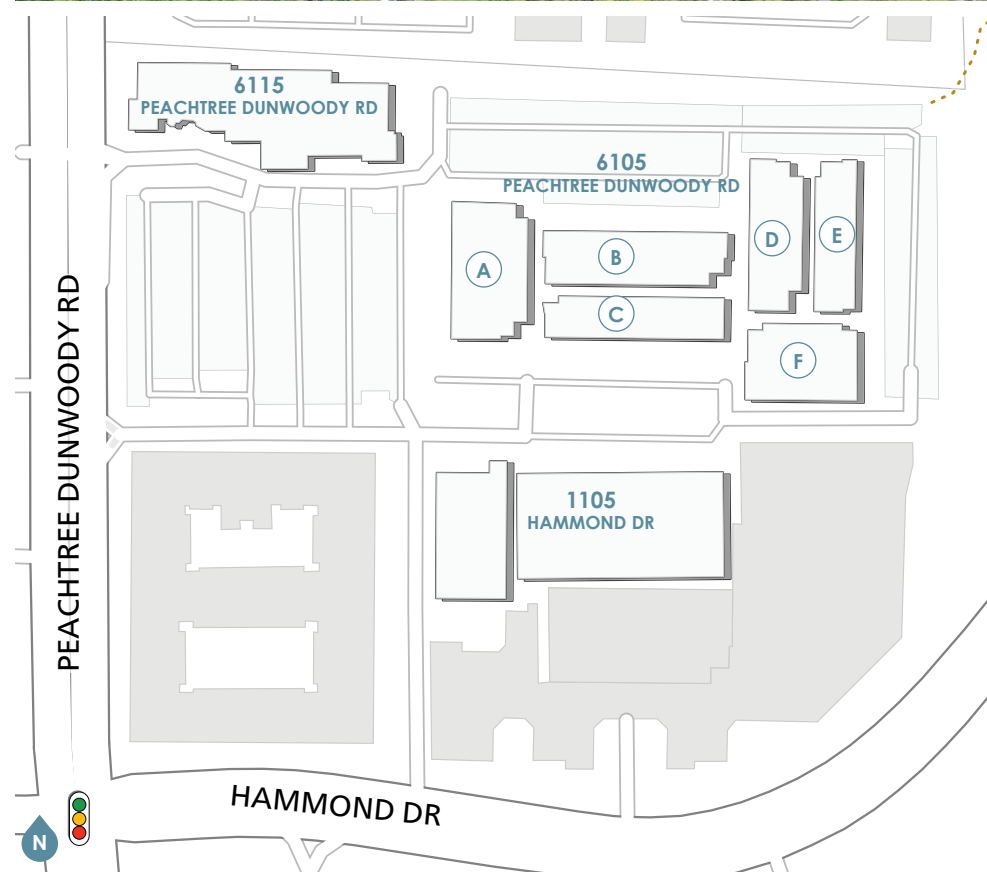
# ATLANTA'S PREMIER LOCATION FOR HEALTHCARE OFFICE

**Perimeter Town Center**, a multi-building medical office and retail-oriented complex, offers healthcare practices an unmatched combination of access, visibility and amenities.

Located at the signalized intersection of Hammond Drive and Peachtree Dunwoody Road, **Perimeter Town Center** is less than a mile away from Pill Hill, the dynamic healthcare hub with three of metro Atlanta's top hospitals, Northside Hospital of Atlanta, Emory at Saint Joseph's and Children Healthcare of Atlanta at Scottish Rite, as well as many of the region's most innovative healthcare practices and outpatient centers. **Perimeter Town Center** is less than a 5-minute drive from some of the country's top employers, including UPS, State Farm and Cox Enterprises.

The Sandy Springs/ Perimeter Center submarket also boasts some of area's most affluent residential neighborhoods in Atlanta, as well as thousands of luxury apartment and townhome communities with a 10-minute walk.

- Multiple access points along Peachtree Dunwoody Road and Hammond Drive
- Ample free surface and covered parking
- On-site management office
- Signage on Peachtree Dunwoody Road
- 24-hour on-site manned security



For Office Leasing, please contact  
**FRANK FARRELL**  
770.913.3948  
ffarrell@ackermanco.net

**LARRY JAREMA**  
770.913.3954  
ljarema@ackermanco.net

Ackerman & Co.

Whether walking or riding, Perimeter Town Center is easily accessible to everything, from world renowned hospitals to Fortune 1000 headquarters to the hottest coffee shops in the city.

### MAJOR OFFICE EMPLOYERS

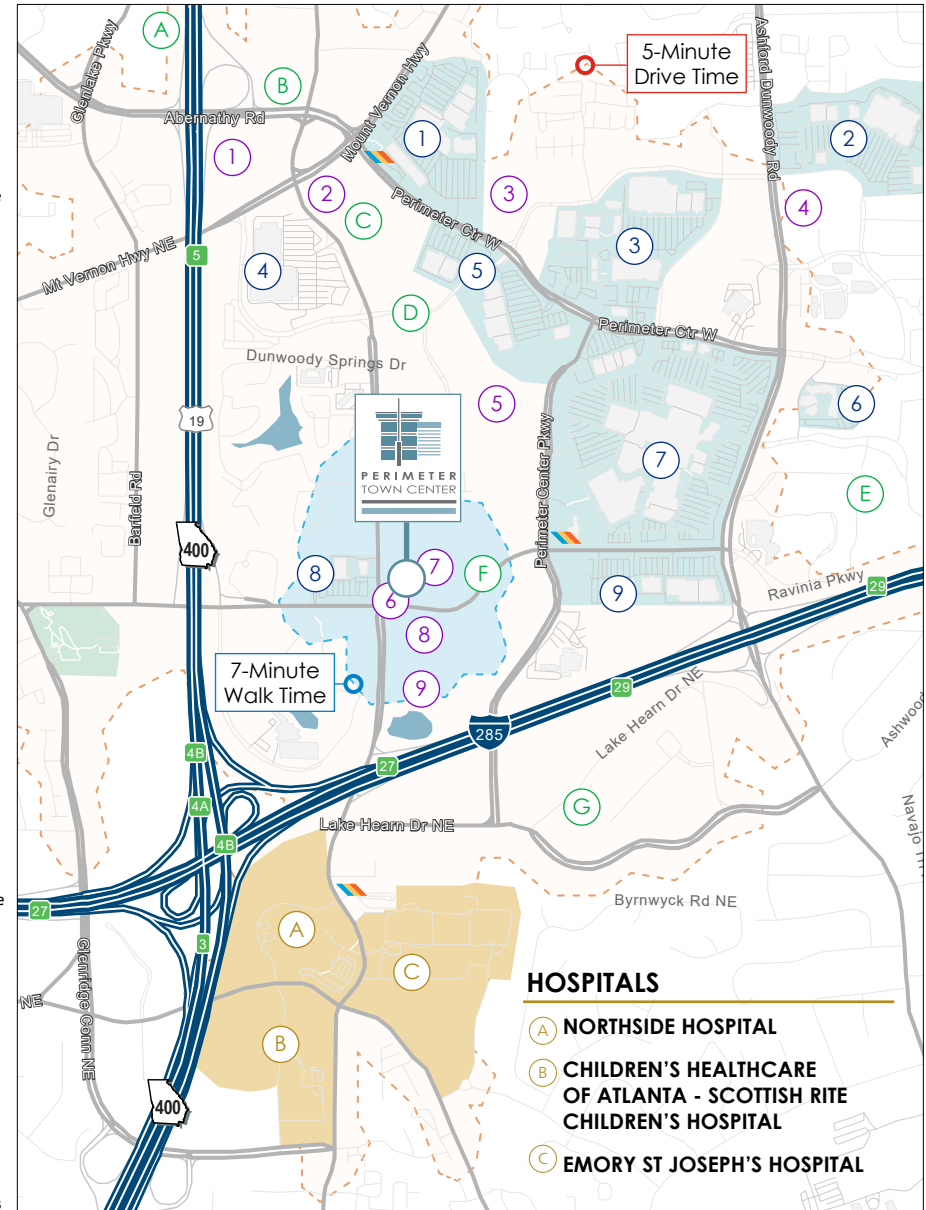
- |   |  |
|---|--|
| <b>A UPS HEADQUARTERS</b><br>👤 4,000+ Employees | <b>E STATE FARM</b><br>👤 2,000+ Employees            |
| <b>B WESTROCK</b><br>👤 1,300+ Employees         | <b>F STATE FARM (PHASE II)</b><br>👤 4,800+ Employees |
| <b>C VMWARE</b><br>👤 1,000+ Employees           | <b>G COX AUTOMOTIVE</b><br>👤 2,000+ Employees        |
| <b>D COX ENTERPRISES</b><br>👤 8,500+ Employees  |  |

### MULTIFAMILY

- |   |   |
|---|---|
| <b>1 NORTH PARK 100</b><br>🏠 350 Units proposed                               | <b>6 ARABELLE</b><br>🏠 384 Units          |
| <b>2 PEACHTREE DUNWOODY PLACE</b><br>🏠 216 Units                              | <b>7 1160 HAMMOND</b><br>🏠 345 Units      |
| <b>3 FLATS AT PERIMETER PLACE</b><br>🏠 323 Units                              | <b>8 SYNC AT PERIMETER</b><br>🏠 341 Units |
| <b>4 BRICKS AT PERIMETER</b><br>🏠 446 Units                                   | <b>9 THE BISHOP</b><br>🏠 425 Units        |
| <b>5 HIGH STREET</b><br>🏠 598 & 212 Units / Phase I<br>🏠 994 Units / Phase II |   |

### SHOPPING & DINING

- 1 PERIMETER POINT**  
🛒 Office Depot, Dick's Sporting Goods, Homegoods, Five Below, LA Fitness, Regal Cinemas, Roam Co-working  
☕ Chick-fil-A, Wendy's, Starbucks, Tropical Smoothie Cafe
- 2 PERIMETER VILLAGE**  
🛒 Walmart, DSW, Hobby Lobby, Party City, Cost Plus World Market  
☕ Olive Garden, J Alexander, Another Broken Egg, The Bird, Taki Japanese Steakhouse, Poke Bar
- 3 ASHFORD LANE**  
🛒 Target, Michael's, Crunch, Ross, My Salon Suites  
☕ Politan Row Food Hall, Flemings, Panera Bread, Chipotle Hob Nob, Cold Stone Creamery, Taco Mac
- 4 COSTCO CENTER**  
🛒 Costco, The Home Depot
- 5 PERIMETER SQUARE**  
🛒 REI, Goodwill, Haverty's, Petsmart, Total Wine  
☕ Zoes Kitchen, La Madeleine, Honey Baked Ham
- 6 PARK PLACE**  
🛒 Jared, Prime Health MD, Fidelity Investors  
☕ Sage Woodfire Tavern, McKendrick's Steakhouse, The Brass Tap
- 7 PERIMETER MALL**  
🛒 Dillard's, Macy's, Nordstrom, Von Maur, Apple, H&M, Zara, Sephora  
☕ Food Court, Cheesecake Factory, Maggiano's Little Italy, Capital Grille, Seasons 52
- 8 PUBLIX AT PERIMETER**  
🛒 Publix, Walgreens, Suntrust, Delta Community Credit Union  
☕ Arby's, Chin Chin, Willy's Mexican Grill, Subway
- 9 PERIMETER EXPO**  
🛒 Best Buy, Marshalls, Nordstrom Rack, Old Navy, Rooms To Go, Onelife Fitness  
☕ Newk's Eatery



For Office Leasing, please contact  
**FRANK FARRELL**  
 770.913.3948  
 ffarrell@ackermanco.net

**LARRY JAREMA**  
 770.913.3954  
 ljarema@ackermanco.net

Ackerman & Co.

# Perimeter Town Center

Medical Office Spaces - 2,234 - 11,645 SF

1150 Hammond Drive

BUILDING	SUITE	RSF
1150	225	2,920
1150	425	4,562
1150	520	4,480

6105 Peachtree Dunwoody Road

BUILDING	SUITE	RSF
6105-A	200	4,302
6105-B	110	11,645
	215*	1,170
	220*	1,392
	225*	2,450
	245	2,268
6105-C	250	2,234
6105-D	135	9,950
	265	3,023
	275	3,155
6105-E	285*	2,083
	290*	3,161
6105-F	295	11,198

\* contiguous



For Office Leasing, please contact  
**FRANK FARRELL**  
 770.913.3948  
 ffarrell@ackermanco.net

**LARRY JAREMA**  
 770.913.3954  
 ljarema@ackermanco.net

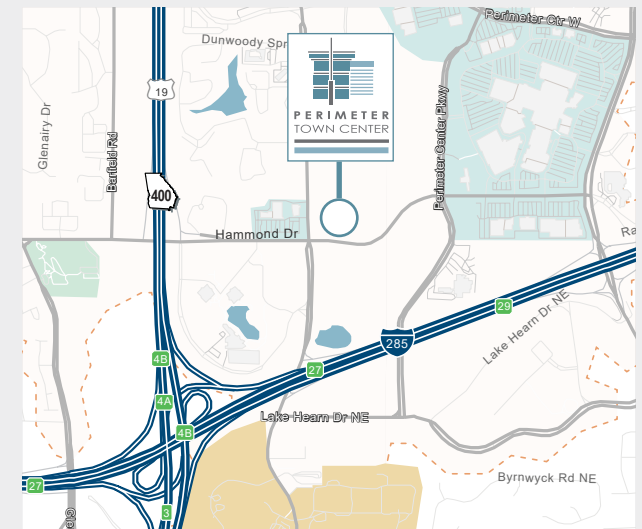
Ackerman & Co.

# Medical/Dental Office Space

1150 Hammond Dr, Atlanta, GA 30328

## HIGHLIGHTS

- Available:
  - **225 | 2,920 SF available**
  - **425 | 4,562 SF available**
  - **520 | 4,480 SF available**
- No hospital use restrictions
- 1/10th of a mile from Dunwoody rail station



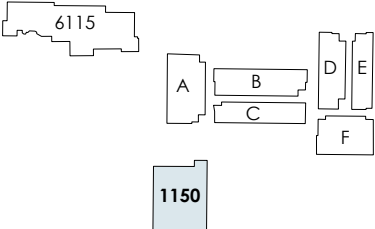
For Office Leasing, please contact  
**LARRY JAREMA**  
770.913.3954  
ljarema@ackermanco.net

**FRANK FARRELL**  
770.913.3948  
ffarrell@ackermanco.net

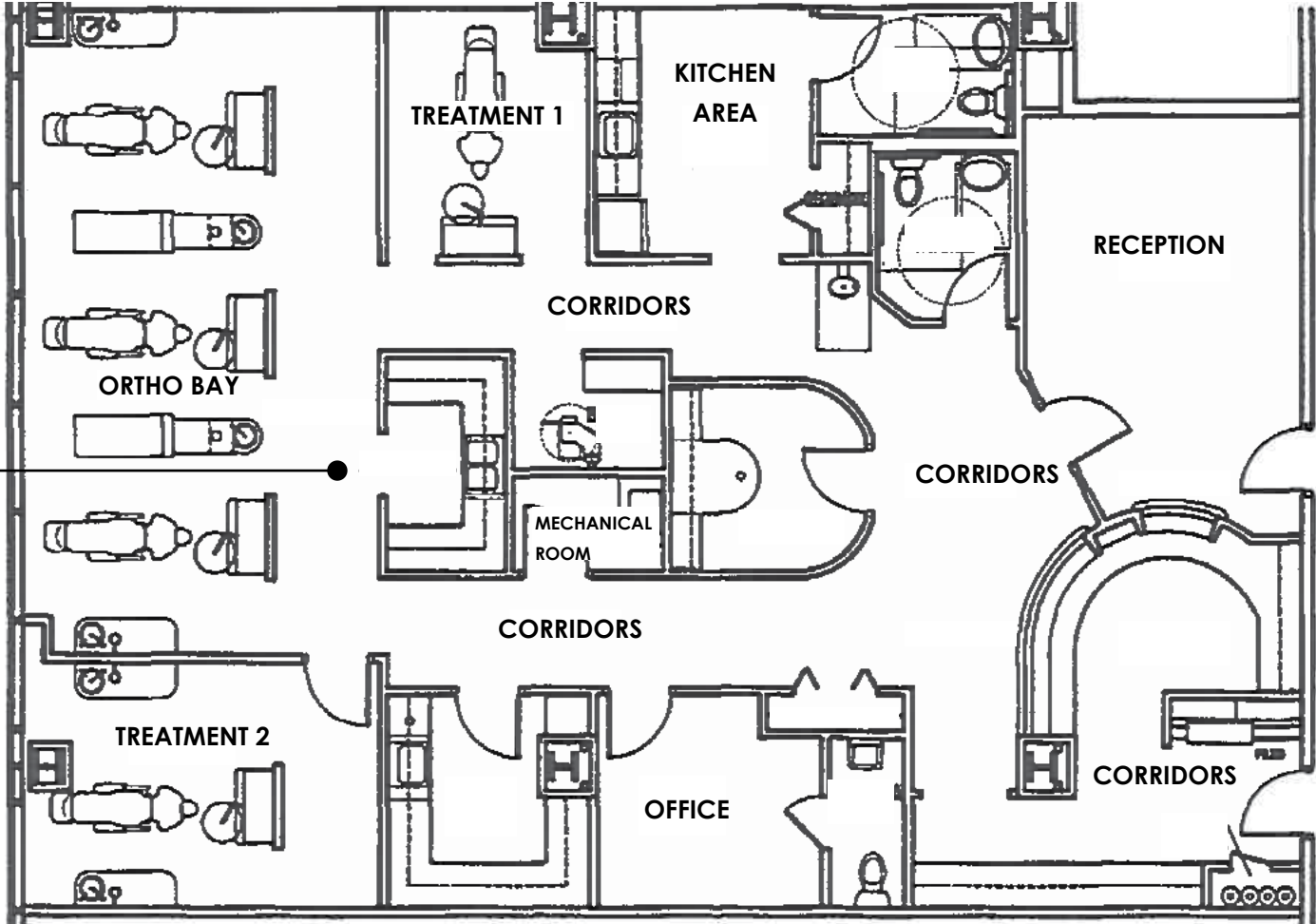
Ackerman & Co.

# Suite 225 | Floor 2

1150 Hammond Dr, Atlanta, GA 30328



Suite 225  
2,920 RSF



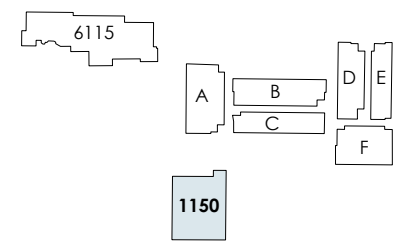
For Office Leasing, please contact  
**FRANK FARRELL**  
770.913.3948  
ffarrell@ackermanco.net

**LARRY JAREMA**  
770.913.3954  
ljarema@ackermanco.net

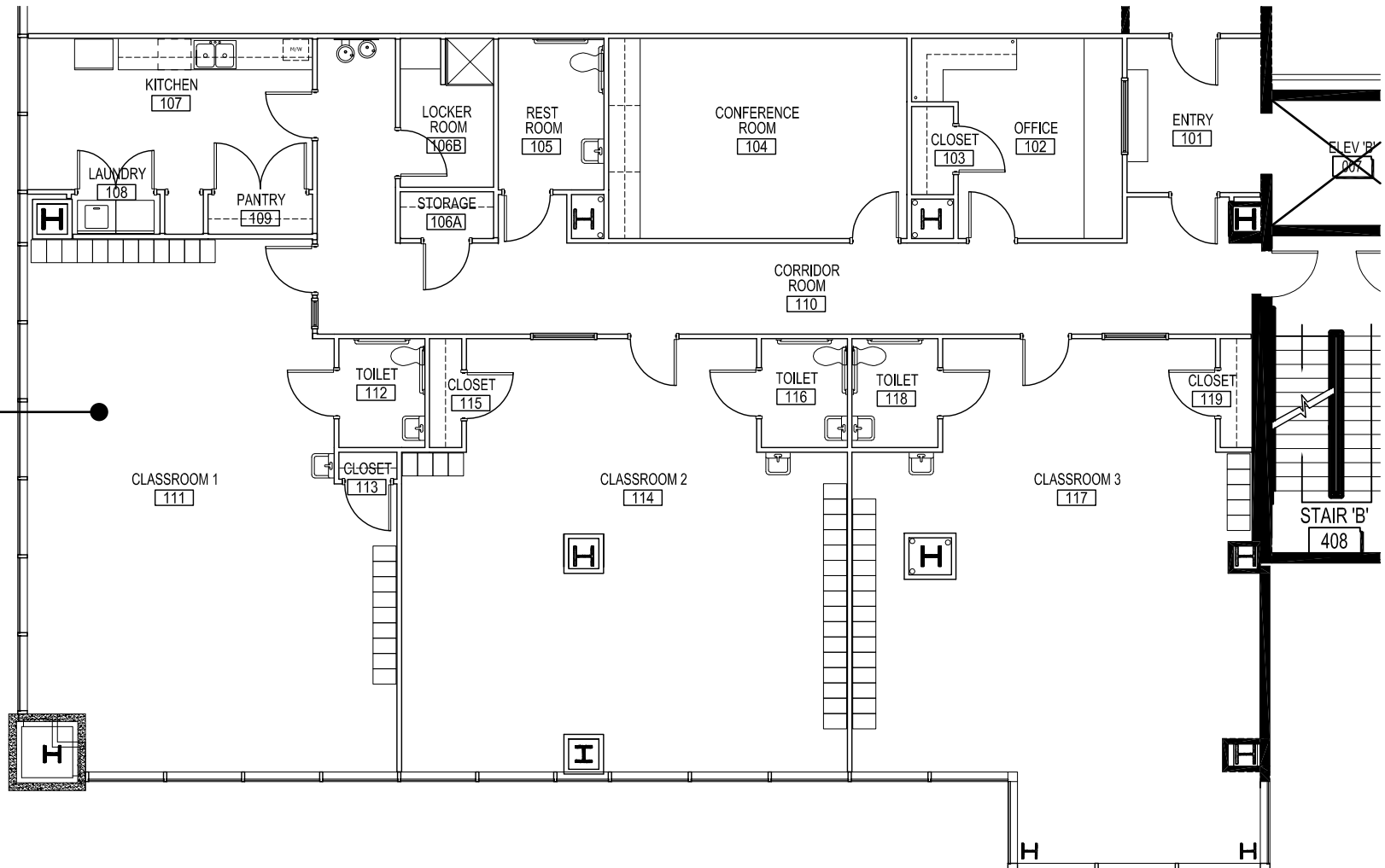
Ackerman & Co.

# Suite 425 | Floor 4

1150 Hammond Dr, Atlanta, GA 30328



Suite 425  
4,562 RSF



For Office Leasing, please contact  
**FRANK FARRELL**  
770.913.3948  
ffarrell@ackermanco.net

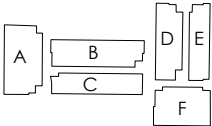
**LARRY JAREMA**  
770.913.3954  
ljarema@ackermanco.net

Ackerman & Co.

# Suite 520 | Floor 5

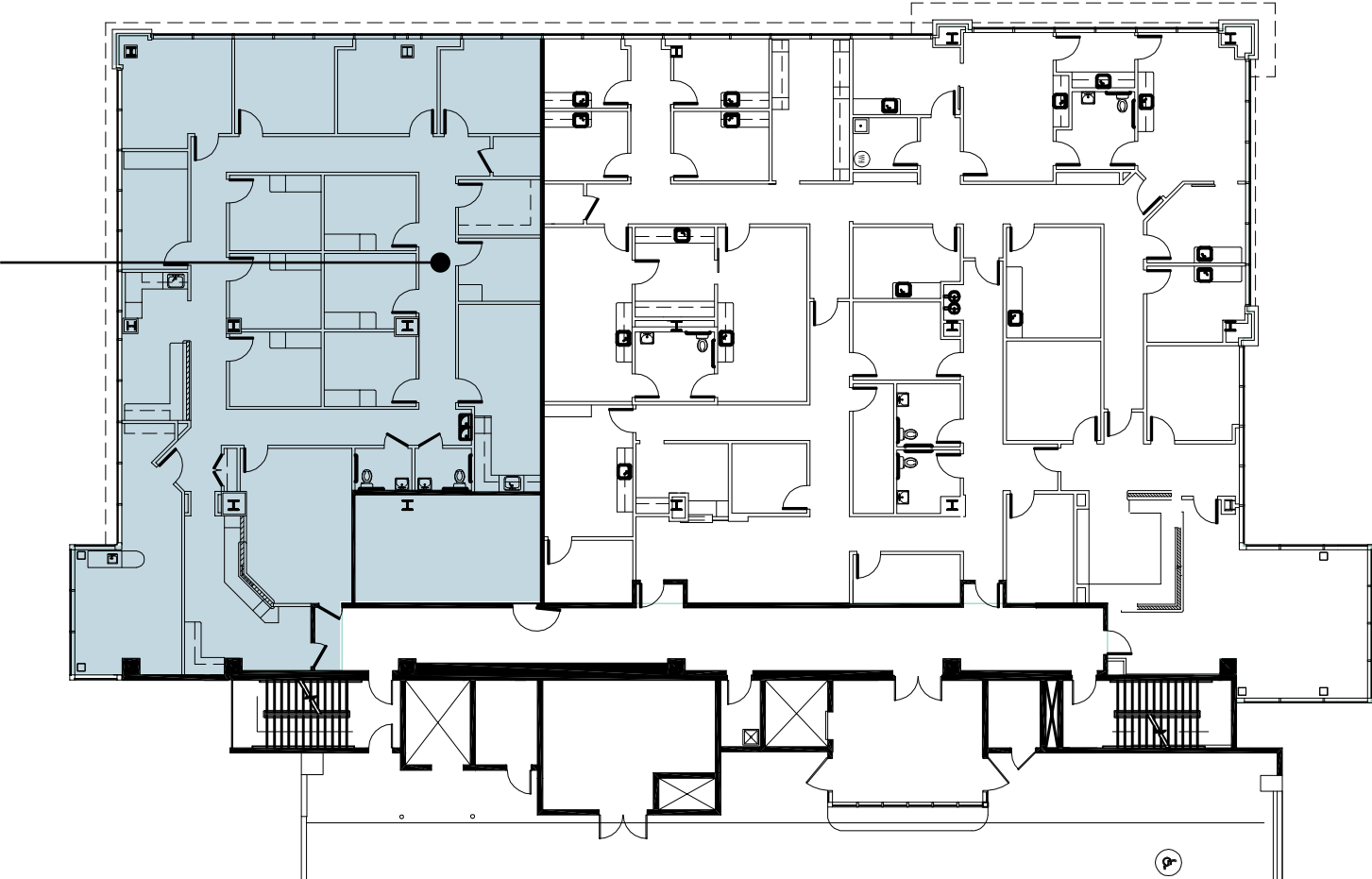
1150 Hammond Dr, Atlanta, GA 30328

6115



1150

Suite 520  
4,480 RSF



For Office Leasing, please contact  
**FRANK FARRELL**  
770.913.3948  
ffarrell@ackermanco.net

**LARRY JAREMA**  
770.913.3954  
ljarema@ackermanco.net

Ackerman & Co.

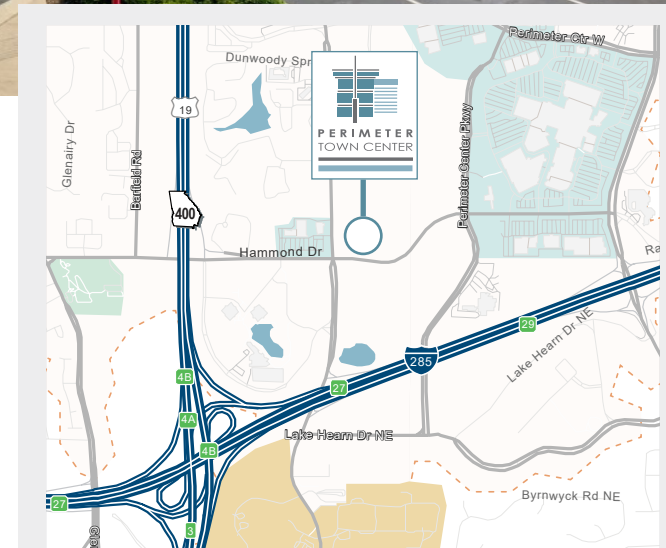


# Medical/Dental/Research Space

6105-A Peachtree Dunwoody , Atlanta, GA 30328

## HIGHLIGHTS

- Available:
  - **SUITE 200 - 4,302 RSF (First Generation)**
  - **SUITE 215 - 3,897 RSF**
- No hospital use restrictions
- Ample free surface and covered parking (4:1,000)
- Eight on-site restaurants and a gourmet coffee shop
- On-site management & building engineers
- 24-hour on-site manned security
- Exceptional ingress/egress
- 1/10th of a mile from Dunwoody rail station



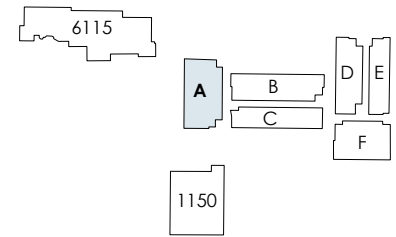
For Office Leasing, please contact  
**LARRY JAREMA**  
770.913.3954  
ljarema@ackermanco.net

**FRANK FARRELL**  
770.913.3948  
ffarrell@ackermanco.net

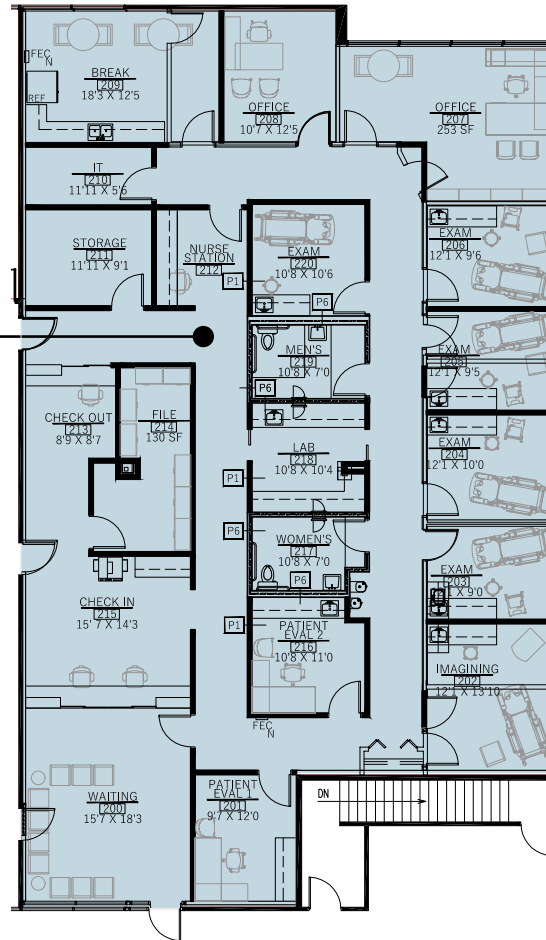
Ackerman & Co.

# Building 6105 - A | Floor 2

6105 Peachtree Dunwoody Rd, Atlanta, GA 30328



**Suite 200**  
4,302 RSF



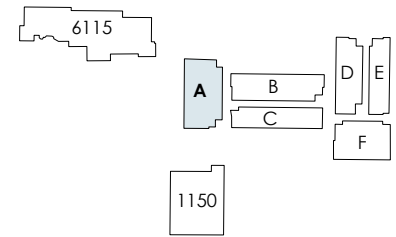
For Office Leasing, please contact  
**FRANK FARRELL**  
770.913.3948  
ffarrell@ackermanco.net

**LARRY JAREMA**  
770.913.3954  
ljarema@ackermanco.net

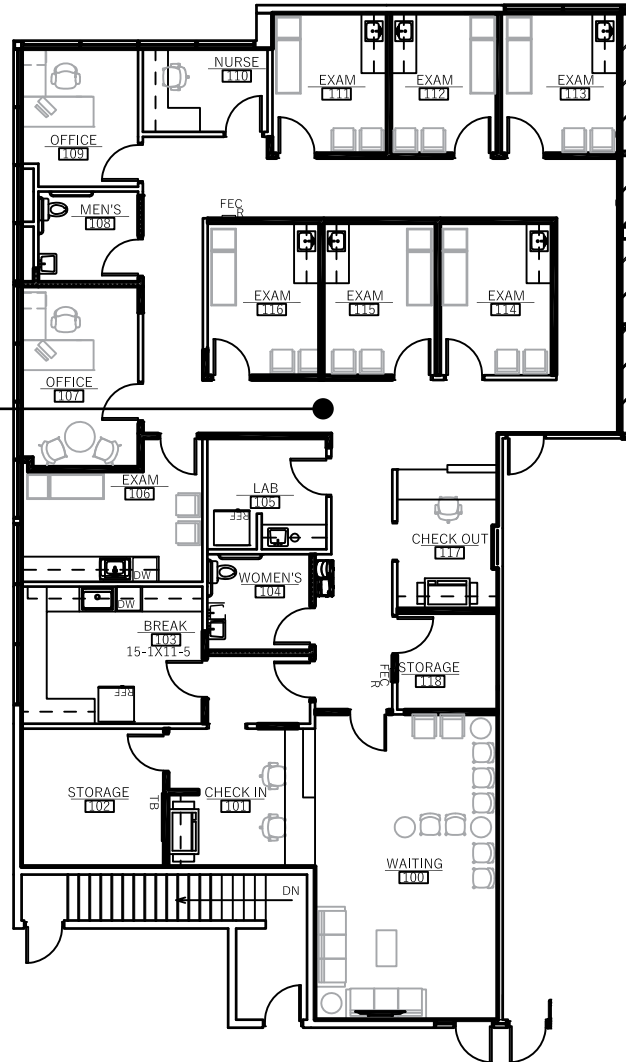
Ackerman & Co.

# Building 6105 - A | Floor 2

6105 Peachtree Dunwoody Rd, Atlanta, GA 30328



**Suite 215**  
3,897 RSF



For Office Leasing, please contact  
**FRANK FARRELL**  
770.913.3948  
ffarrell@ackermanco.net

**LARRY JAREMA**  
770.913.3954  
ljarema@ackermanco.net

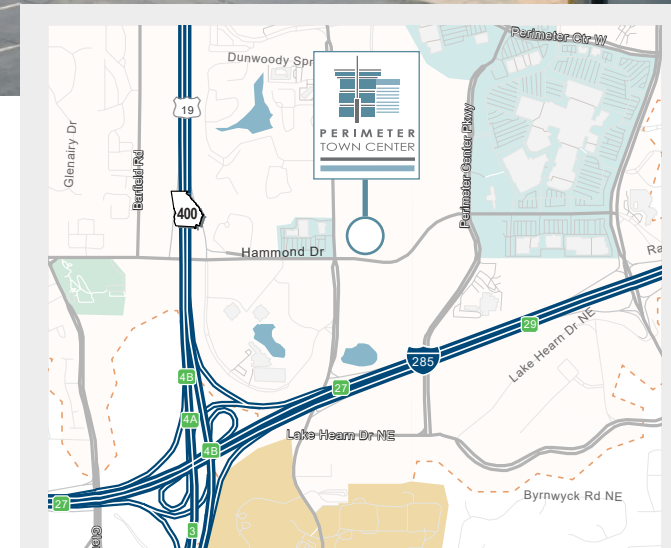
Ackerman & Co.

# Medical Office/ Surgical Space

6105-B Peachtree Dunwoody, Atlanta, GA 30328

## HIGHLIGHTS

- Available:
  - SUITE 110 - 11,645 RSF
  - SUITE 215, 225 - 5,012 RSF Contiguous (First Generation; Space)
  - SUITE 240 2,268 (First Generation)
- Former outpatient surgery center
- ASC with 5 operating rooms
- No hospital use restrictions
- 1/10th of a mile from Dunwoody rail station



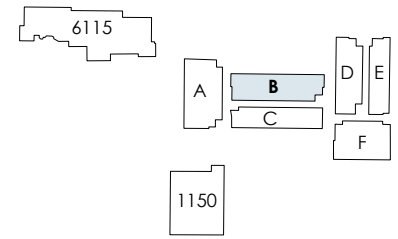
For Office Leasing, please contact  
**FRANK FARRELL**  
770.913.3948  
ffarrell@ackermanco.net

**LARRY JAREMA**  
770.913.3954  
ljarema@ackermanco.net

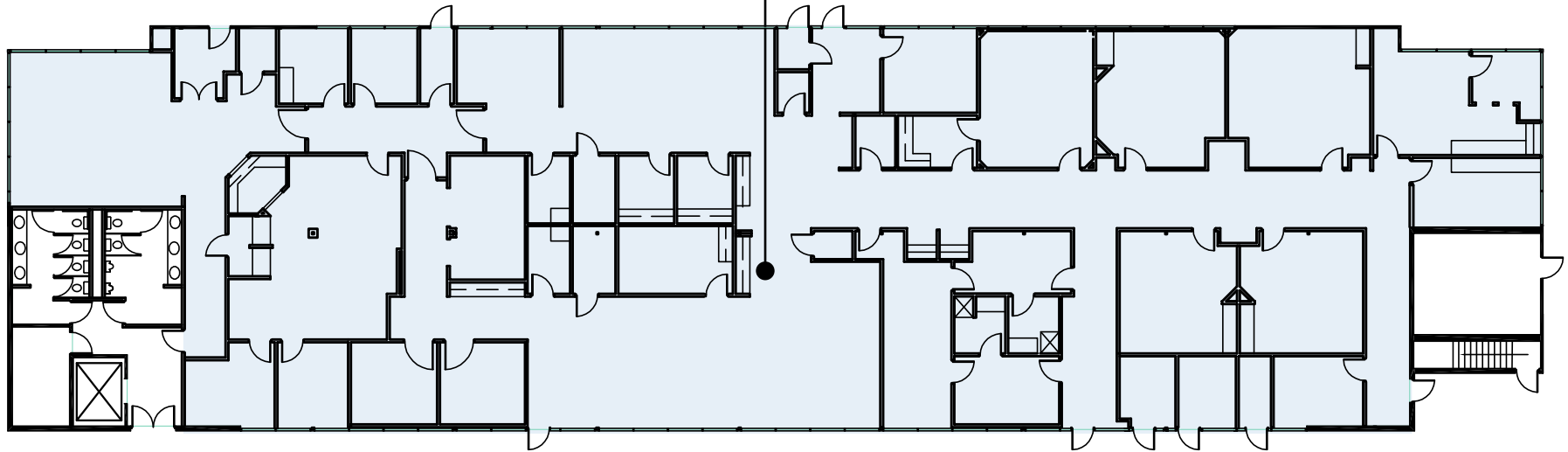
Ackerman & Co.

# Building 6105 - B | Floor 1

6105 Peachtree Dunwoody Rd, Atlanta, GA 30328



**Suite 110**  
11,645 RSF



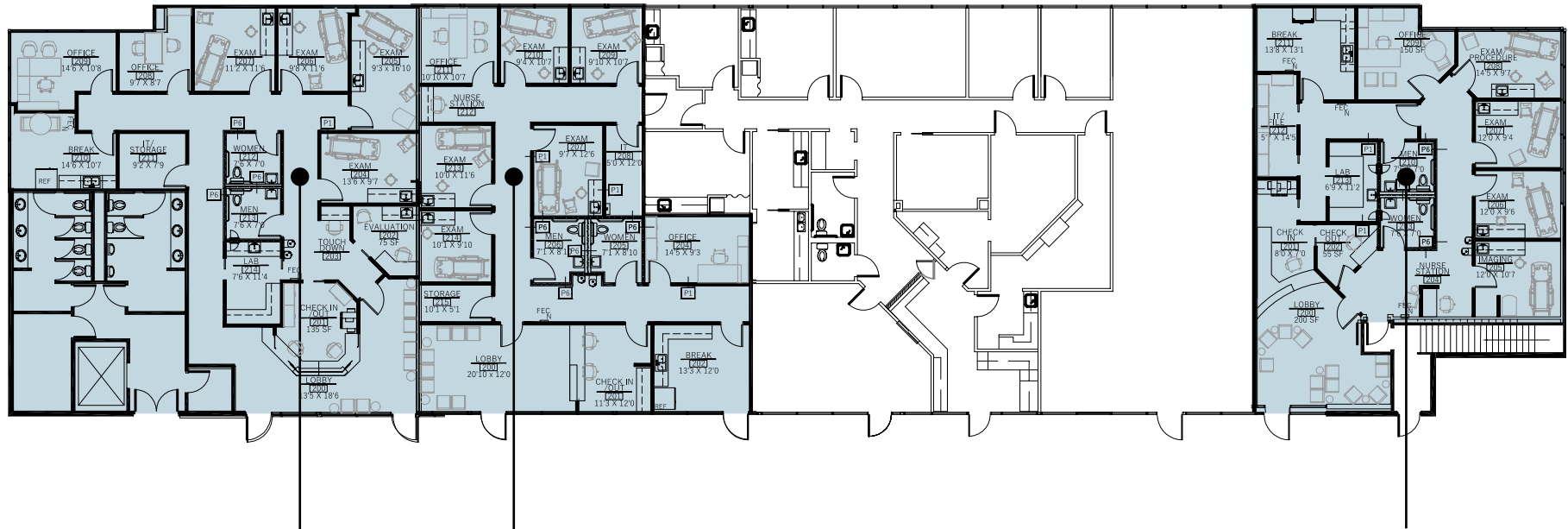
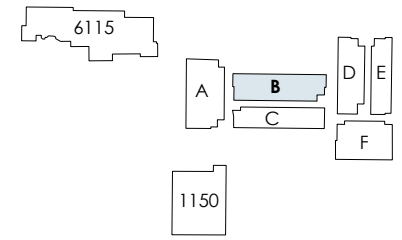
For Office Leasing, please contact  
**FRANK FARRELL**  
770.913.3948  
ffarrell@ackermanco.net

**LARRY JAREMA**  
770.913.3954  
ljarema@ackermanco.net

Ackerman & Co.

# Building 6105 - B | Floor 2

6105 Peachtree Dunwoody Rd, Atlanta, GA 30328



**Suite 215**  
2,565 RSF

**Suite 225**  
2,450 RSF

**Suite 240**  
2,268 RSF

**Contiguous Space Available | 5,012 RSF**



For Office Leasing, please contact  
**FRANK FARRELL**  
770.913.3948  
ffarrell@ackermanco.net

**LARRY JAREMA**  
770.913.3954  
ljarema@ackermanco.net

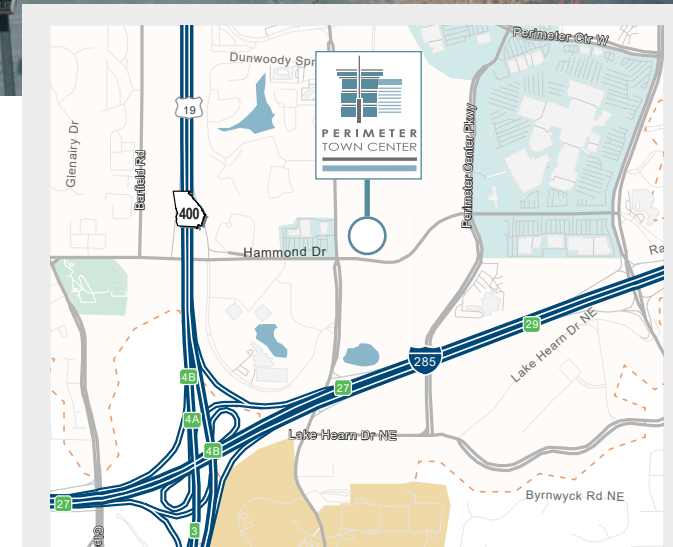
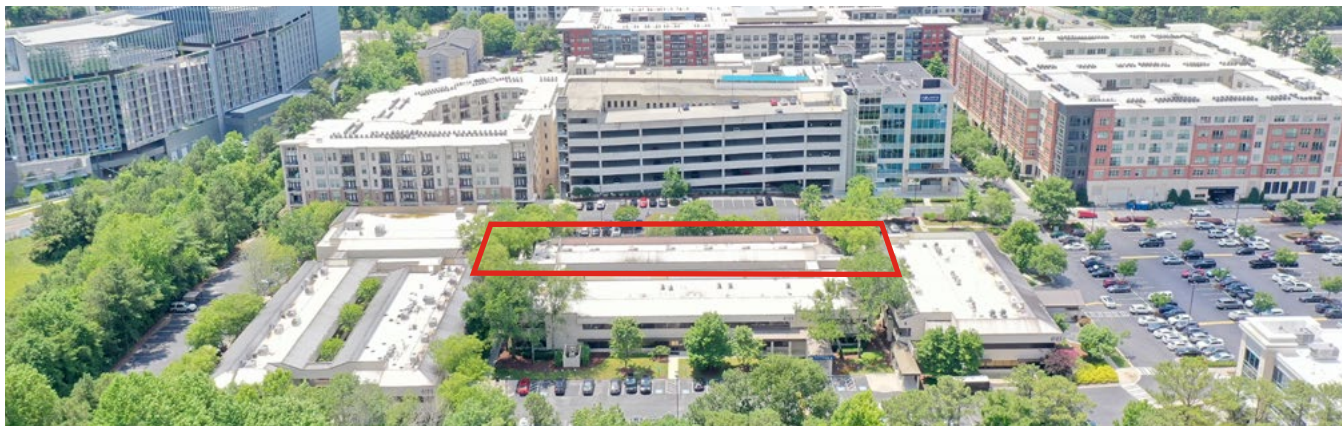
Ackerman & Co.

# Medical Office

6105-C Peachtree Dunwoody Rd, Atlanta, GA 30328

## HIGHLIGHTS

- Available:
  - **SUITE 250 - 2,234 RSF**
- New construction spec suite
- No hospital use restrictions
- Ample free surface and covered parking (4:1,000)
- Eight on-site restaurants and a gourmet coffee shop
- On-site management & building engineers
- 24-hour on-site manned security
- Exceptional ingress/egress
- 1/10th of a mile from Dunwoody rail station



For Office Leasing, please contact  
**FRANK FARRELL**  
770.913.3948  
ffarrell@ackermanco.net

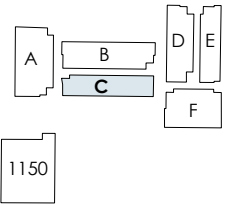
**LARRY JAREMA**  
770.913.3954  
ljarema@ackermanco.net

Ackerman & Co.

# Building 6105 - C | Floor 2

6105 Peachtree Dunwoody Rd, Atlanta, GA 30328

6115



**Suite 250**  
2,234 RSF



For Office Leasing, please contact  
**FRANK FARRELL**  
770.913.3948  
ffarrell@ackermanco.net

**LARRY JAREMA**  
770.913.3954  
ljarema@ackermanco.net

Ackerman & Co.



# Building 6105 - C

6105 Peachtree Dunwoody Rd, Atlanta, GA 30328



For Office Leasing, please contact  
**FRANK FARRELL**  
770.913.3948  
ffarrell@ackermanco.net

**LARRY JAREMA**  
770.913.3954  
ljarema@ackermanco.net

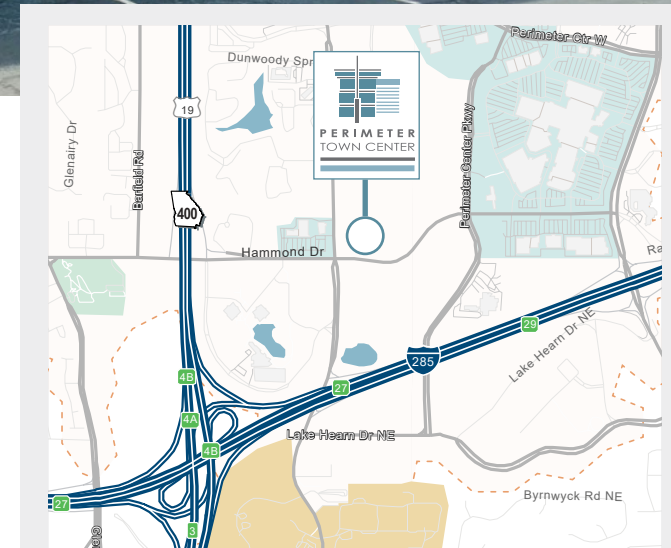
Ackerman & Co.

# Medical Office

6105-D Peachtree Dunwoody Rd, Atlanta, GA 30328

## HIGHLIGHTS

- Available:
  - SUITE 135- 9,950 RSF
  - SUITE 265 - 3,023 RSF (PARTIALLY BUILT OUT)
  - SUITE 275 - 3,155 RSF
- No hospital use restrictions
- Ample free surface and covered parking (4:1,000)
- Eight on-site restaurants and a gourmet coffee shop
- On-site management & building engineers
- 24-hour on-site manned security
- Exceptional ingress/egress
- 1/10th of a mile from Dunwoody rail station



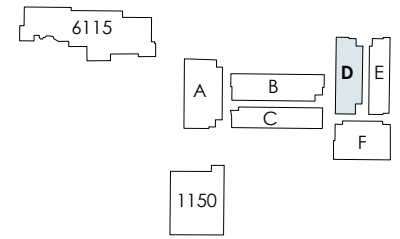
For Office Leasing, please contact  
**FRANK FARRELL**  
770.913.3948  
ffarrell@ackermanco.net

**LARRY JAREMA**  
770.913.3954  
ljarema@ackermanco.net

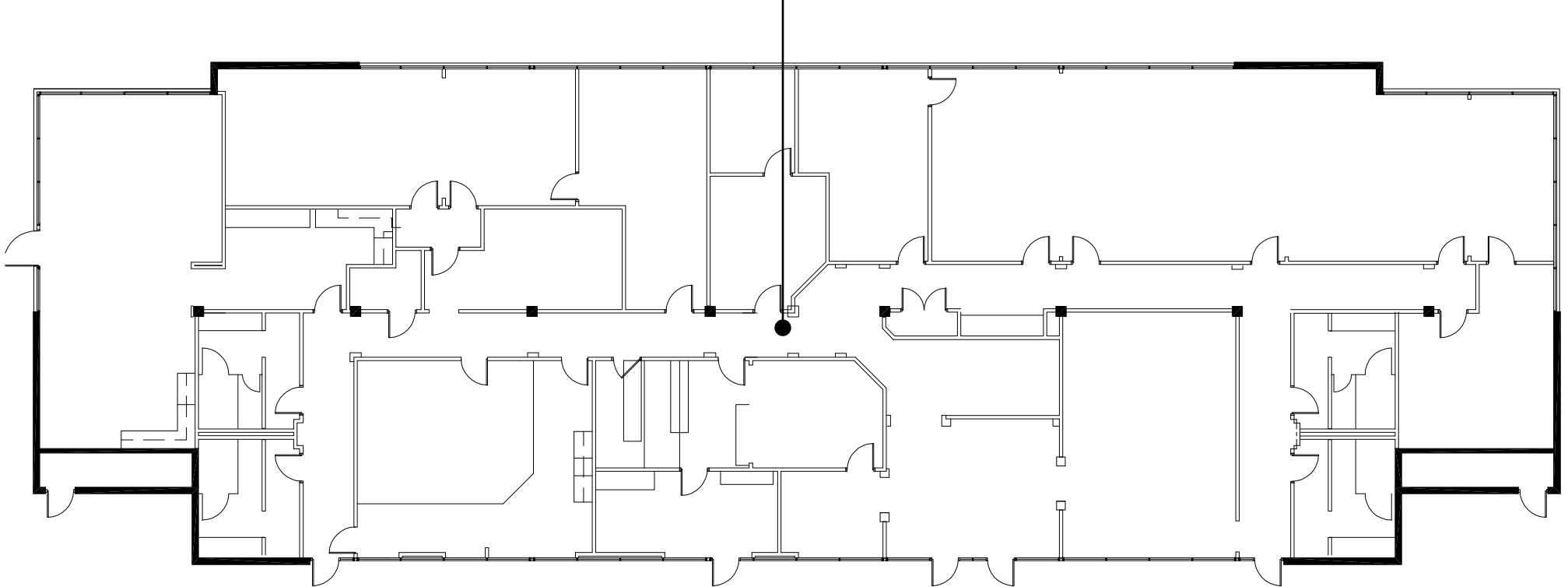
Ackerman & Co.

# Building 6105 - D | Floor 1

6105 Peachtree Dunwoody Rd, Atlanta, GA 30328



**Suite 135**  
9,950 RSF



*For Office Leasing, please contact*  
**FRANK FARRELL**  
770.913.3948  
ffarrell@ackermanco.net

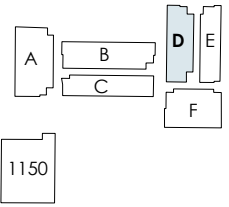
**LARRY JAREMA**  
770.913.3954  
ljarema@ackermanco.net

Ackerman & Co.

# Building 6105 - D | Floor 2

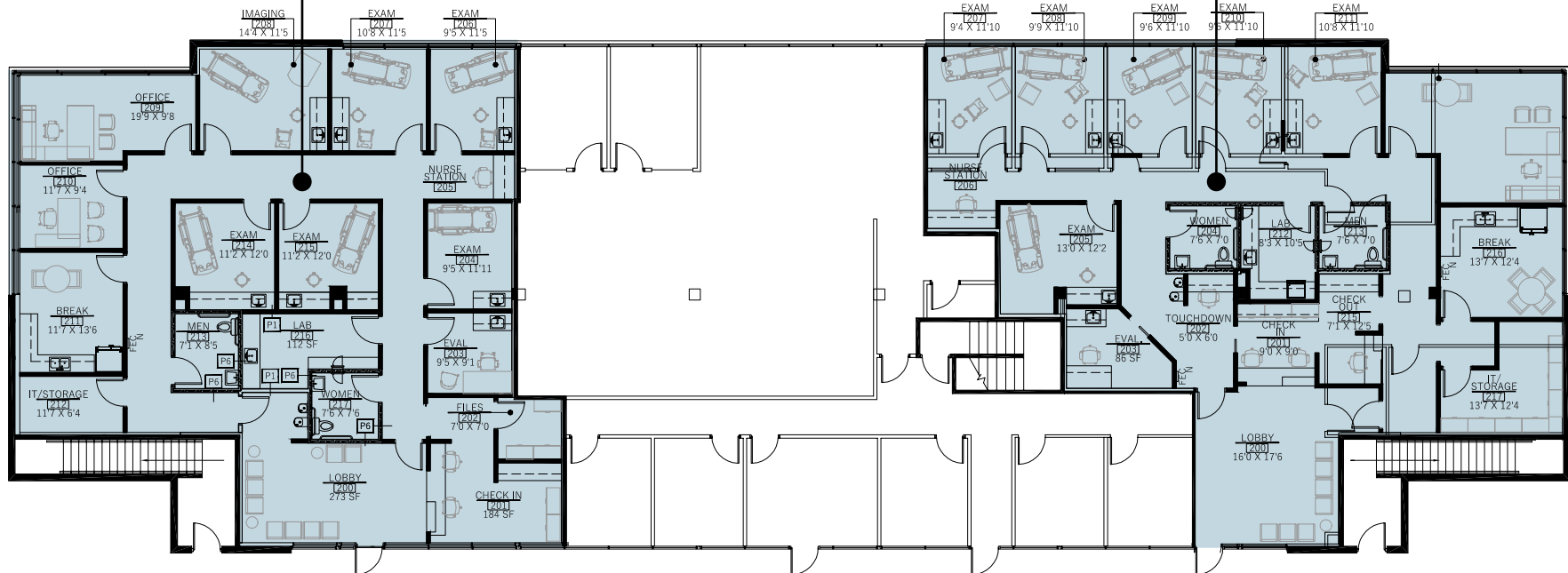
6105 Peachtree Dunwoody Rd, Atlanta, GA 30328

6115



**Suite 275**  
3,155 RSF

**Suite 265**  
3,023 RSF



For Office Leasing, please contact  
**FRANK FARRELL**  
770.913.3948  
ffarrell@ackermanco.net

**LARRY JAREMA**  
770.913.3954  
ljarema@ackermanco.net

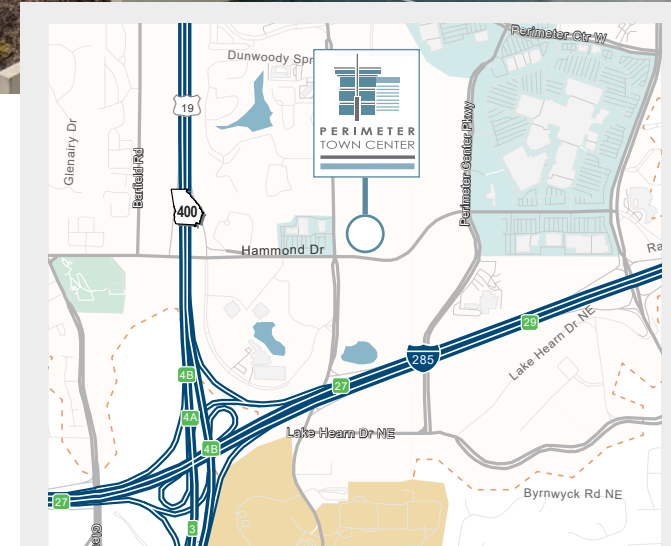
Ackerman & Co.

# Medical Office

6105-E Peachtree Dunwoody Rd, Atlanta, GA 30328

## HIGHLIGHTS

- Available:
  - **SUITE 290 - 3,161 RSF (FIRST GENERATION)**
  - **SUITE 285 - 2,083 RSF (FIRST GENERATION)**
- No hospital use restrictions
- Ample free surface and covered parking (4:1,000)
- Eight on-site restaurants and a gourmet coffee shop
- On-site management & building engineers
- 24-hour on-site manned security
- Exceptional ingress/egress
- 1/10th of a mile from Dunwoody rail station



PERIMETER  
TOWN CENTER

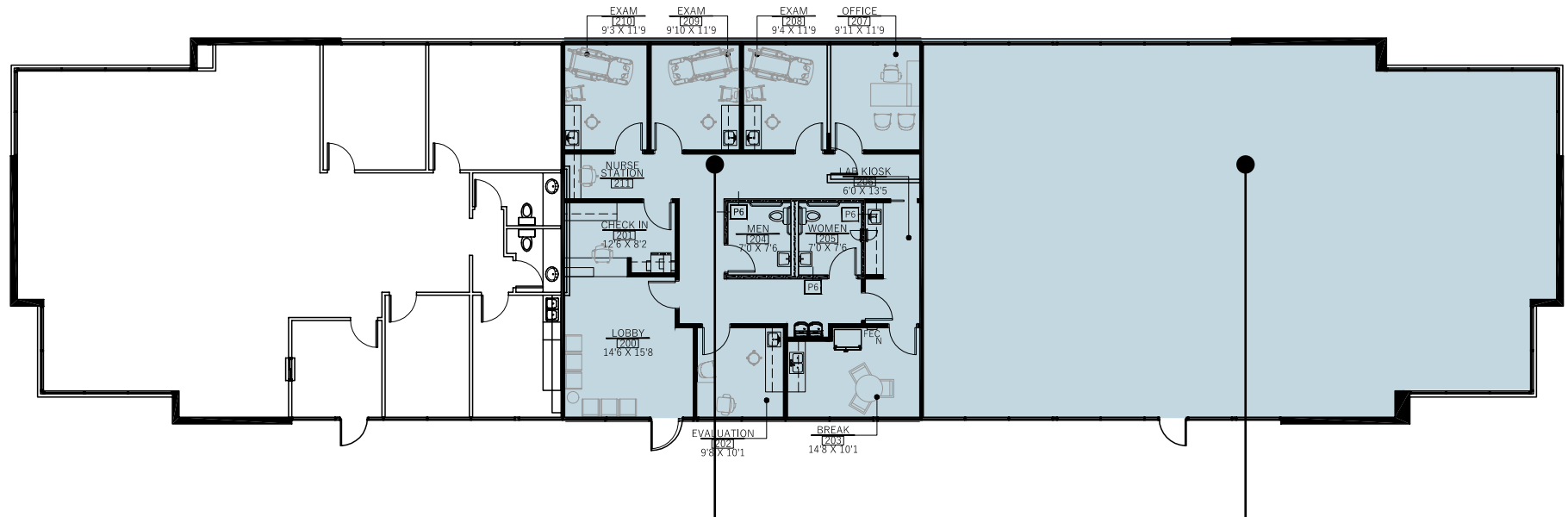
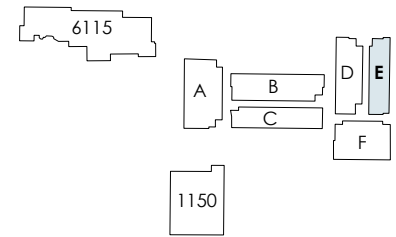
For Office Leasing, please contact  
**FRANK FARRELL**  
770.913.3948  
ffarrell@ackermanco.net

**LARRY JAREMA**  
770.913.3954  
ljarema@ackermanco.net

Ackerman & Co.

# Building 6105 - E | Floor 2

6105 Peachtree Dunwoody Rd, Atlanta, GA 30328



**Suite 285**  
2,083 RSF

**Suite 290**  
3,161 RSF

**Contiguous Space Available | 5,244 RSF**



For Office Leasing, please contact  
**FRANK FARRELL**  
770.913.3948  
ffarrell@ackermanco.net

**LARRY JAREMA**  
770.913.3954  
ljarema@ackermanco.net

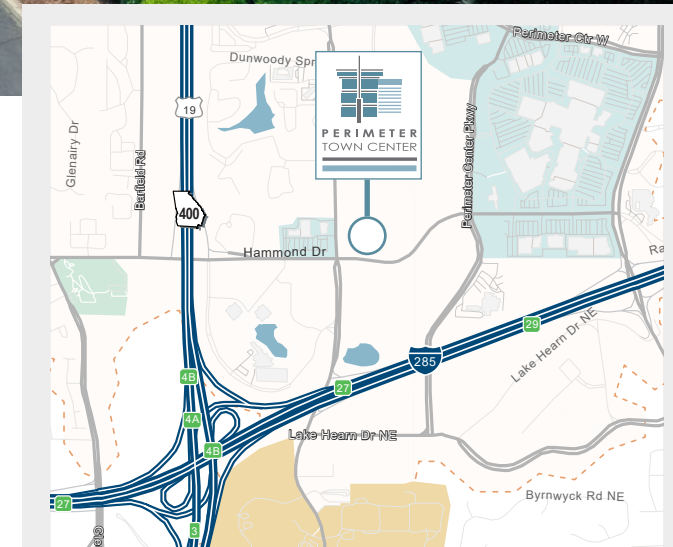
Ackerman & Co.

# Medical Office

6105-F Peachtree Dunwoody Rd, Atlanta, GA 30328

## HIGHLIGHTS

- Available:
  - **SUITE 295 - 11,198 RSF (FIRST GENERATION)**
- No hospital use restrictions
- Ample free surface and covered parking (4:1,000)
- Eight on-site restaurants and a gourmet coffee shop
- On-site management & building engineers
- 24-hour on-site manned security
- Exceptional ingress/egress
- 1/10th of a mile from Dunwoody rail station



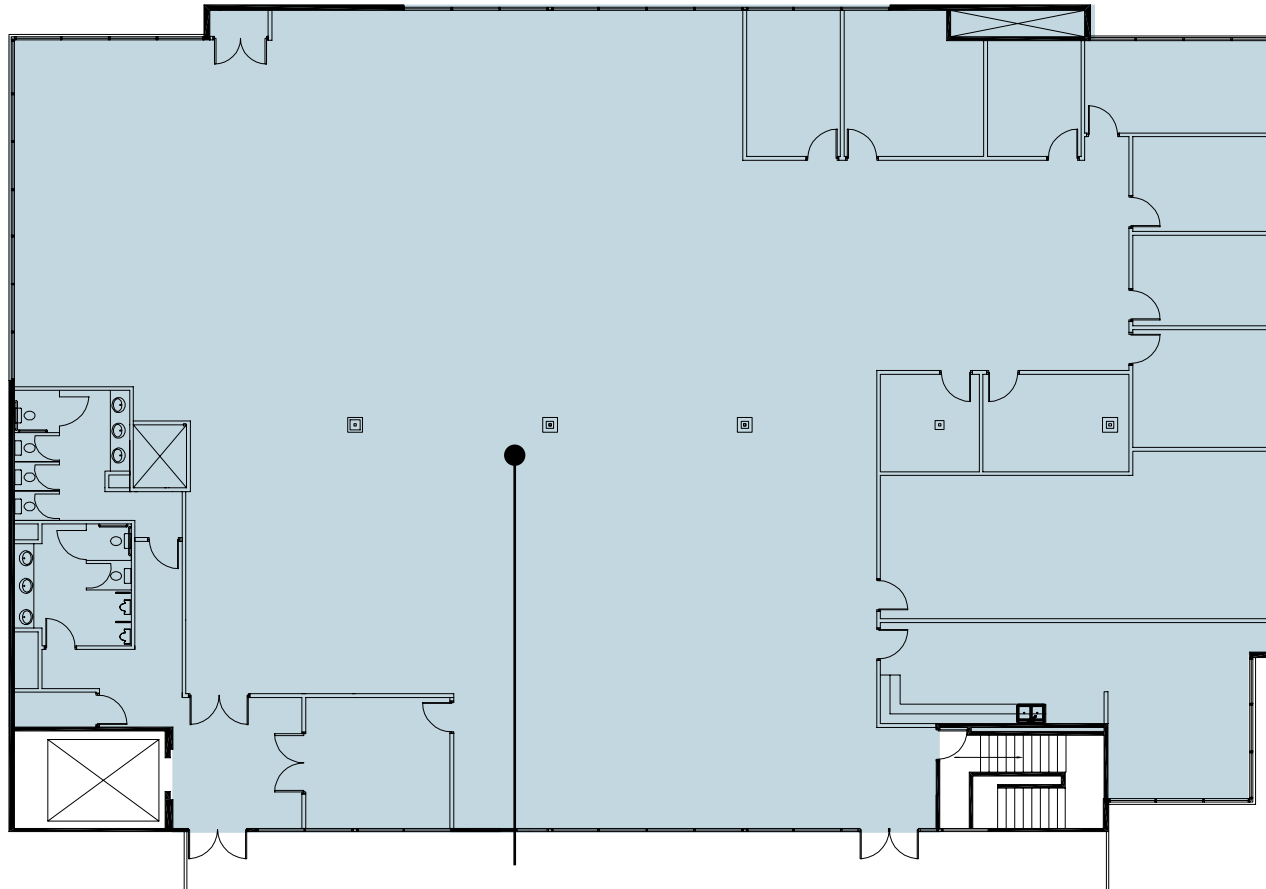
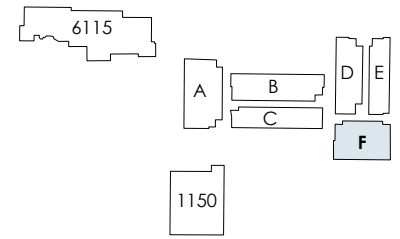
For Office Leasing, please contact  
**FRANK FARRELL**  
770.913.3948  
ffarrell@ackermanco.net

**LARRY JAREMA**  
770.913.3954  
ljarema@ackermanco.net

Ackerman & Co.

# Building 6105 - F | Floor 2

6105 Peachtree Dunwoody Rd, Atlanta, GA 30328



**Suite 295**

11,198 RSF



For Office Leasing, please contact  
**FRANK FARRELL**  
770.913.3948  
ffarrell@ackermanco.net

**LARRY JAREMA**  
770.913.3954  
ljarema@ackermanco.net

Ackerman & Co.