



PERIMETER
TOWN CENTER



6105 & 6115 PEACHTREE DUNWOODY RD • 1150 HAMMOND DR
ATLANTA, GA 30328

Ackerman & Co.

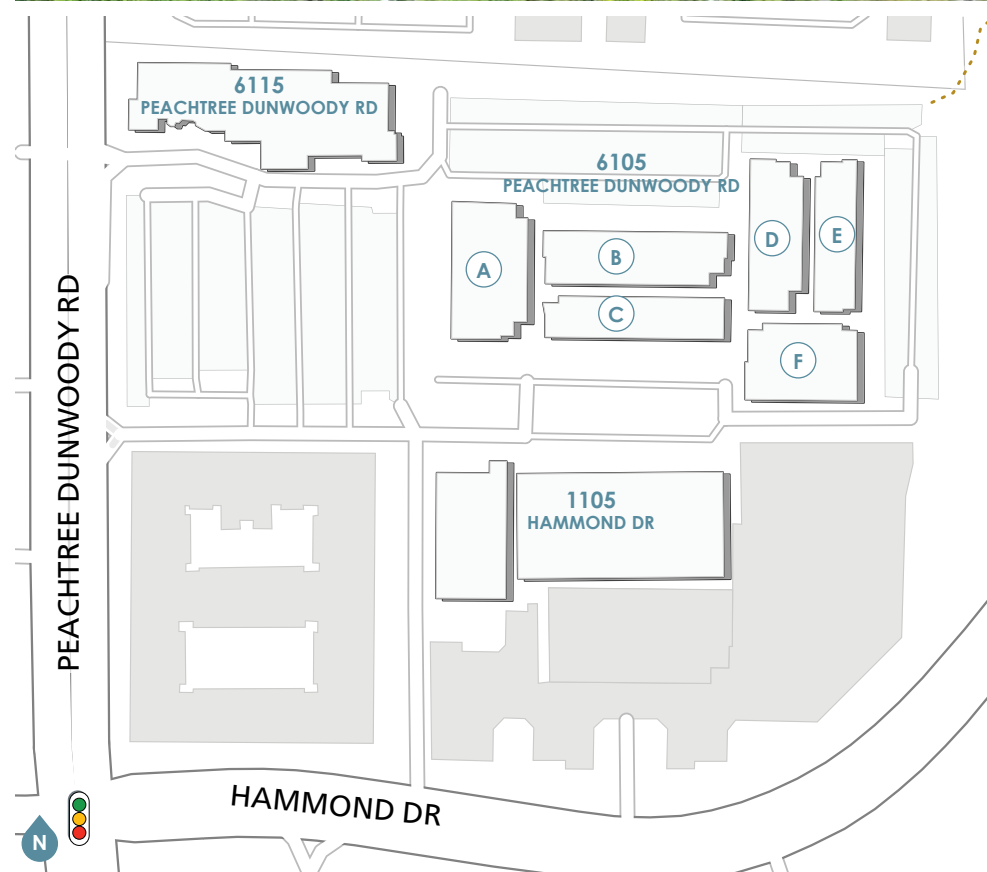
ATLANTA'S PREMIER LOCATION FOR HEALTHCARE OFFICE

Perimeter Town Center, a multi-building medical office and retail-oriented complex, offers healthcare practices an unmatched combination of access, visibility and amenities.

Located at the signalized intersection of Hammond Drive and Peachtree Dunwoody Road, **Perimeter Town Center** is less than a mile away from Pill Hill, the dynamic healthcare hub with three of metro Atlanta's top hospitals, Northside Hospital of Atlanta, Emory at Saint Joseph's and Children Healthcare of Atlanta at Scottish Rite, as well as many of the region's most innovative healthcare practices and outpatient centers. **Perimeter Town Center** is less than a 5-minute drive from some of the country's top employers, including UPS, State Farm and Cox Enterprises.

The Sandy Springs/ Perimeter Center submarket also boasts some of area's most affluent residential neighborhoods in Atlanta, as well as thousands of luxury apartment and townhome communities with a 10-minute walk.

- Multiple access points along Peachtree Dunwoody Road and Hammond Drive
- Ample free surface and covered parking
- On-site management office
- Signage on Peachtree Dunwoody Road
- 24-hour on-site manned security



For Office Leasing, please contact
KEVIN EHRINGER
770.913.3960
kehringer@ackermanco.net

For Retail Leasing, please contact
COURTNEY BRUMBELOW
770.913.3905
cbrumbelow@ackermanco.net

Ackerman & Co.

Whether walking or riding, Perimeter Town Center is easily accessible to everything, from world renowned hospitals to Fortune 1000 headquarters to the hottest coffee shops in the city.

MAJOR OFFICE EMPLOYERS

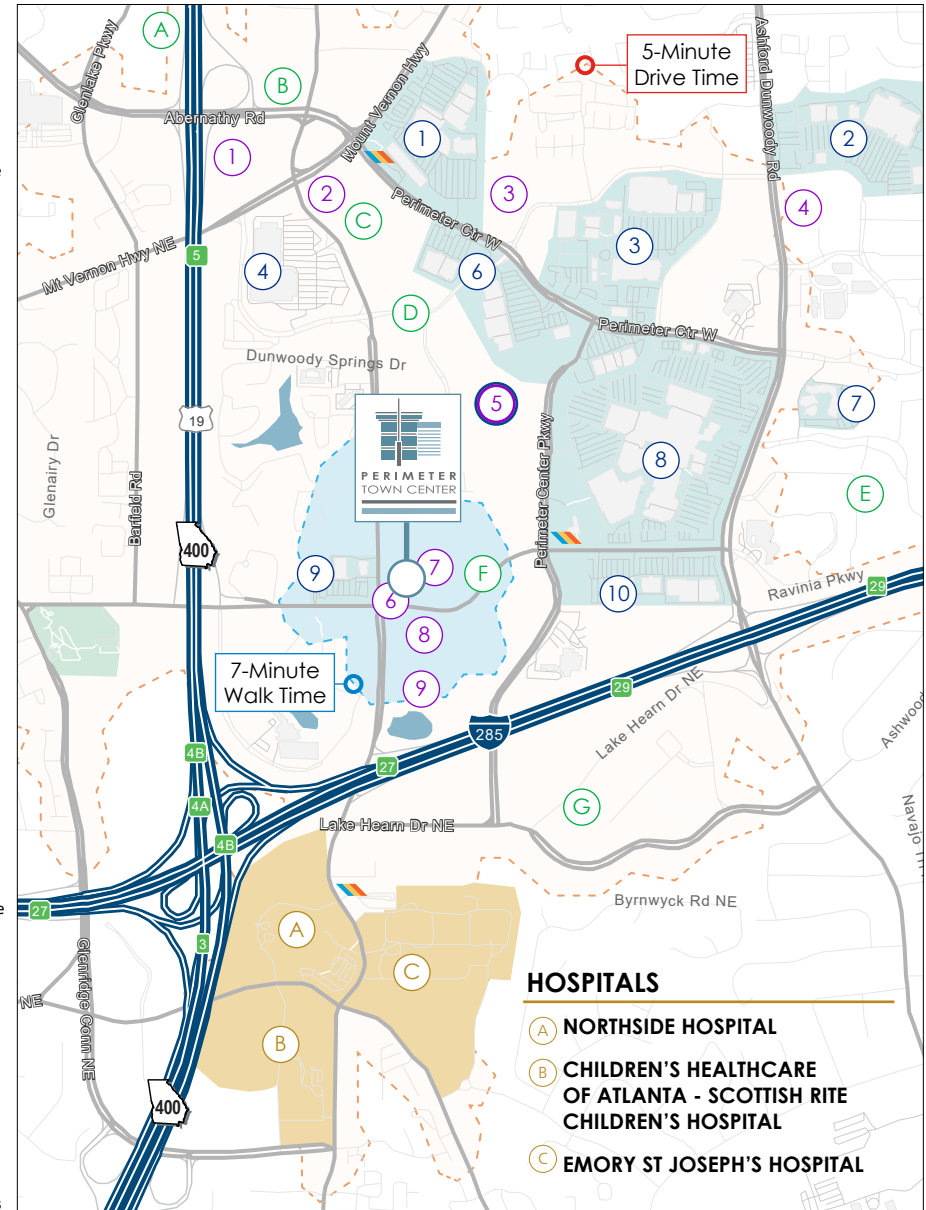
- | | |
|---|--|
| A UPS HEADQUARTERS
4,000+ Employees | E STATE FARM
2,000+ Employees |
| B WESTROCK
1,300+ Employees | F STATE FARM (PHASE II)
4,800+ Employees |
| C VMWARE
1,000+ Employees | G COX AUTOMOTIVE
2,000+ Employees |
| D COX ENTERPRISES
8,500+ Employees | |

MULTIFAMILY

- | | |
|---|---|
| 1 NORTHPARK 100
350 Units proposed | 6 ARABELLE
384 Units |
| 2 PEACHTREE DUNWOODY PLACE
216 Units | 7 1160 HAMMOND
345 Units |
| 3 FLATS AT PERIMETER PLACE
323 Units | 8 SYNC AT PERIMETER
341 Units |
| 4 BRICKS AT PERIMETER
446 Units | 9 THE BISHOP
425 Units |
| 5 HIGH STREET
598 & 212 Units / Phase I
994 Units / Phase II | |

SHOPPING & DINING

- 1 PERIMETER POINT**
 - Dick's Sporting Goods, Five Below, LA Fitness, Regal Cinemas, Roam Co-working
 - Chick-fil-A, Wendy's, Starbucks, Tropical Smoothie Cafe
- 2 PERIMETER VILLAGE**
 - DSW, Hobby Lobby, Party City, Cost Plus World Market
 - Olive Garden, J Alexander, Another Broken Egg, The Bird, Taki Japanese Steakhouse, Poke Bar
- 3 ASHFORD LANE**
 - Target, Michael's, Crunch, Ross, My Salon Suites
 - Politan Row Food Hall, Flemings, Chipotle, Hob Nob, Cold Stone Creamery, Grana, Superica
- 4 COSTCO CENTER**
 - Costco, The Home Depot
- 5 HIGH STREET**
 - Puttshack, Hampton Social, Velvet Taco, Nando's, Sugarcoat, Cuddlesh
- 6 PERIMETER SQUARE**
 - REI, Goodwill, Haverty's, Petsmart, Total Wine
 - Cava, La Madeleine, Honey Baked Ham
- 7 PARK PLACE**
 - Jared, Prime Health MD, Fidelity Investors
 - Sage Woodfire Tavern, McKendrick's Steakhouse, The Brass Tap
- 8 PERIMETER MALL**
 - Dillard's, Macy's, Nordstrom, Von Maur, Apple, H&M, Zara, Sephora
 - Food Court, Cheesecake Factory, Maggiano's Little Italy, Capital Grille, Seasons 52
- 9 PUBLIX AT PERIMETER**
 - Publix, Walgreens, Suntrust, Delta Community Credit Union
 - Arby's, Chin Chin, Willy's Mexican Grill, Subway
- 10 PERIMETER EXPO**
 - Best Buy, Marshalls, Nordstrom Rack, Old Navy, Rooms To Go, Onelife Fitness
 - Newk's Eatery



For Office Leasing, please contact
KEVIN EHRINGER
 770.913.3960
 kehinger@ackermanco.net

For Retail Leasing, please contact
COURTNEY BRUMBELOW
 770.913.3905
 cbrumbelow@ackermanco.net

Ackerman & Co.

Perimeter Town Center

Medical Office Spaces - 1,170 - 11,645 SF

1150 Hammond Drive

BUILDING	SUITE	RSF
1150	225	2,920
1150	425	4,562
1150	520	4,480

6105 Peachtree Dunwoody Road

BUILDING	SUITE	RSF
6105-A	200	4,302
6105-B	110	11,645
	215*	1,170
	220*	1,392
	225*	2,450
	245	2,268
6105-C	250	2,234
6105-D	135	9,950
	265	3,023
	275	3,155
6105-E	285*	2,083
	290*	3,161
6105-F	295	11,198

* contiguous

6115 Peachtree Dunwoody Road

BUILDING	SUITE	RSF
6115	130	2,806



For Office Leasing, please contact
KEVIN EHRINGER
 770.913.3960
 kehninger@ackermanco.net

For Retail Leasing, please contact
COURTNEY BRUMBELOW
 770.913.3905
 cbrumbelow@ackermanco.net

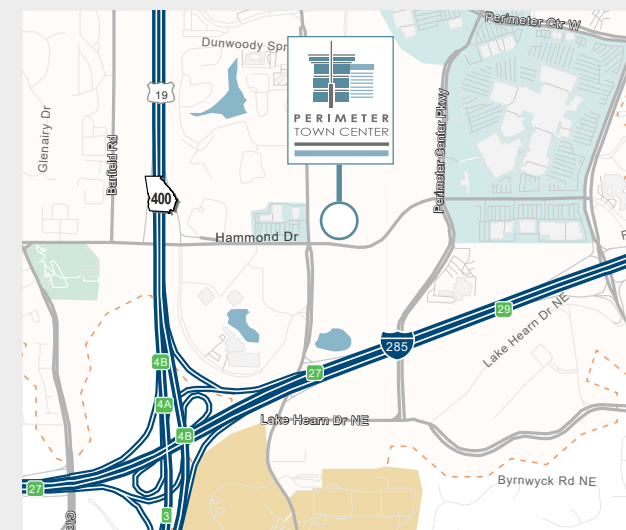
Ackerman & Co.

Medical/Dental Office Space

1150 Hammond Dr, Atlanta, GA 30328

HIGHLIGHTS

- Available:
 - **225 | 2,920 SF available**
 - **425 | 4,562 SF available**
 - **520 | 4,480 SF available**
- No hospital use restrictions
- 1/10th of a mile from Dunwoody rail station

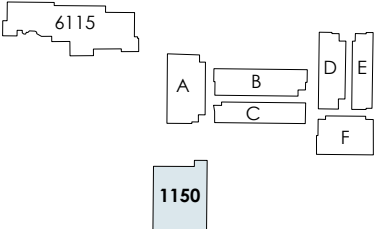


For Office Leasing, please contact
KEVIN EHRINGER
770.913.3960
kehringer@ackermanco.net

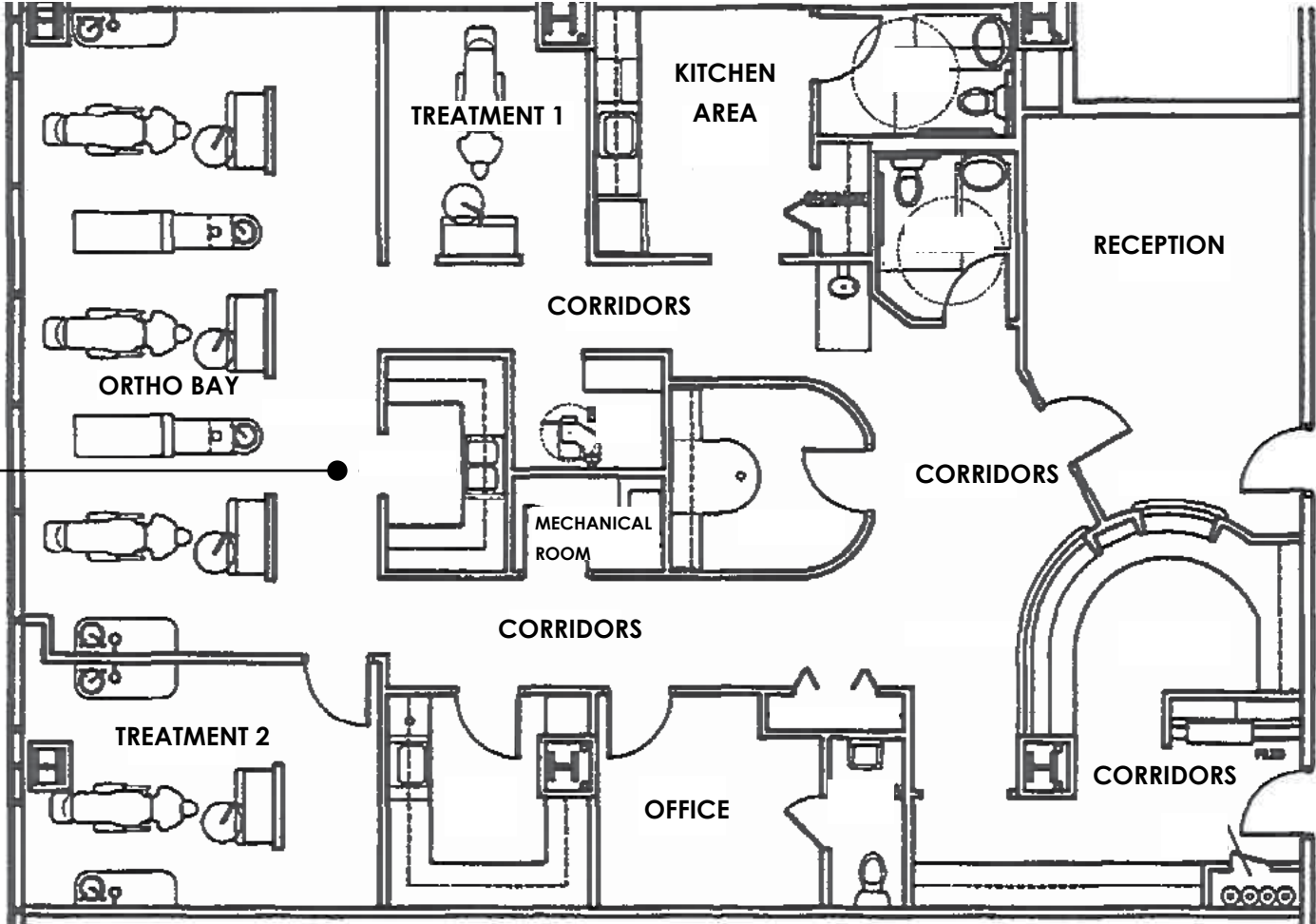
Ackerman & Co.

Suite 225 | Floor 2

1150 Hammond Dr, Atlanta, GA 30328



Suite 225
2,920 RSF

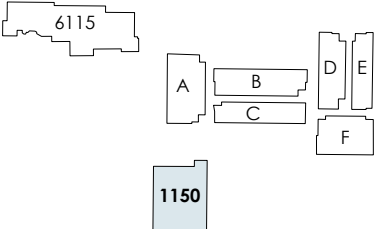


For Office Leasing, please contact
KEVIN EHRINGER
770.913.3960
kehringer@ackermanco.net

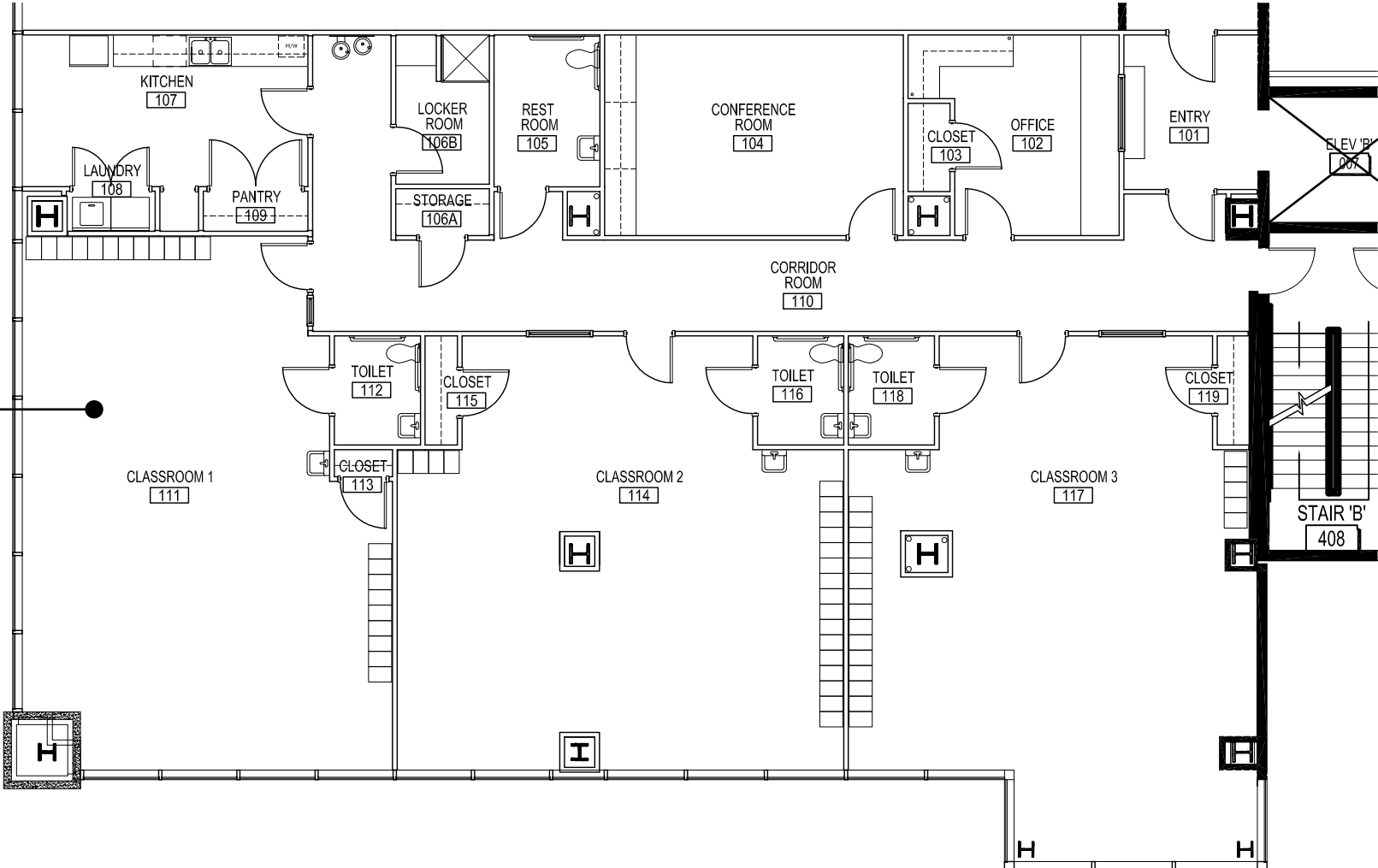
Ackerman & Co.

Suite 425 | Floor 4

1150 Hammond Dr, Atlanta, GA 30328



Suite 425
4,562 RSF



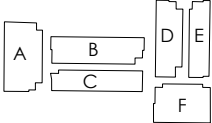
For Office Leasing, please contact
KEVIN EHRINGER
770.913.3960
kehringer@ackermanco.net

Ackerman & Co.

Suite 520 | Floor 5

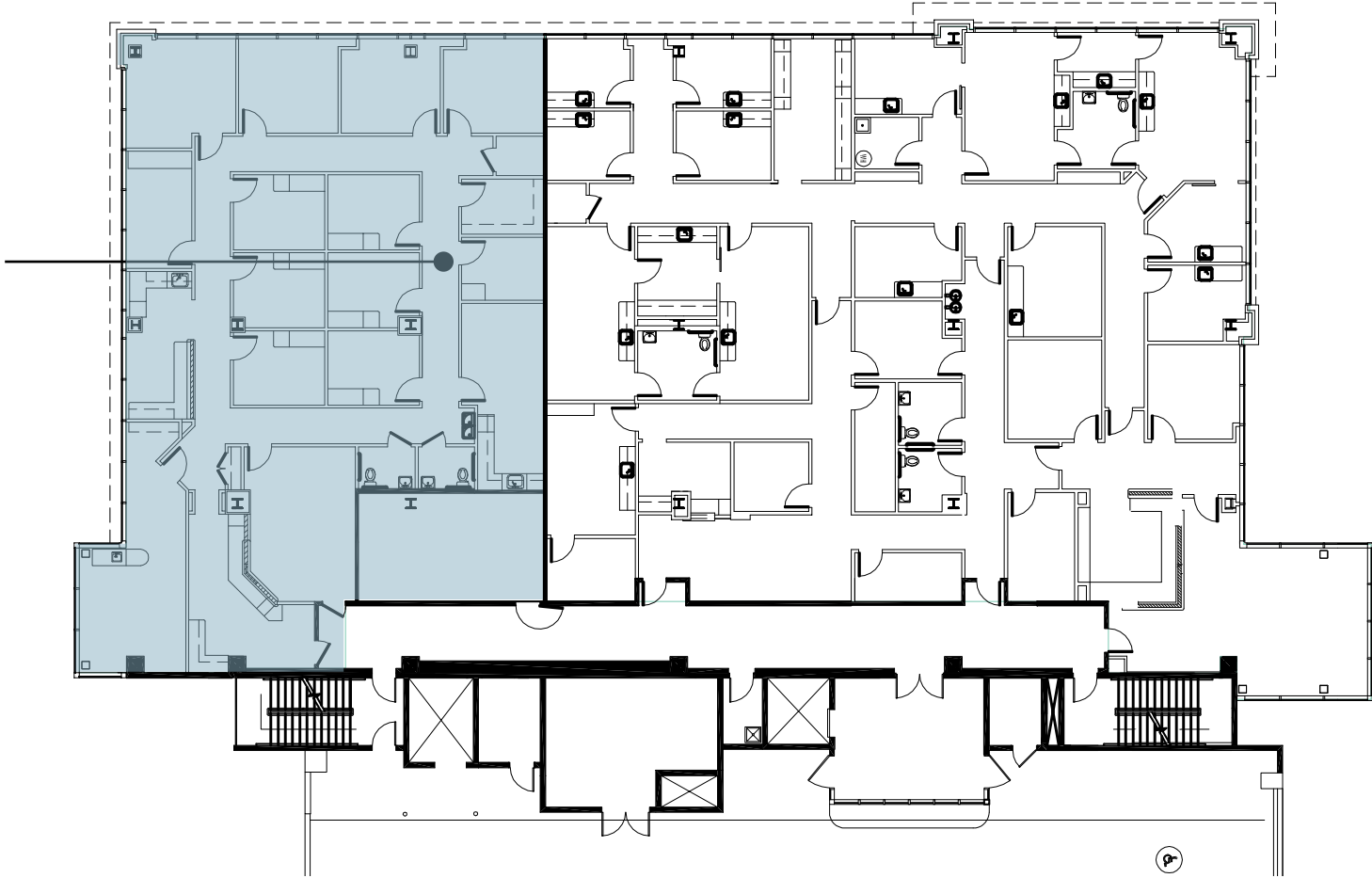
1150 Hammond Dr, Atlanta, GA 30328

6115



1150

Suite 520
4,480 RSF



For Office Leasing, please contact
KEVIN EHRINGER
770.913.3960
kehringer@ackermanco.net

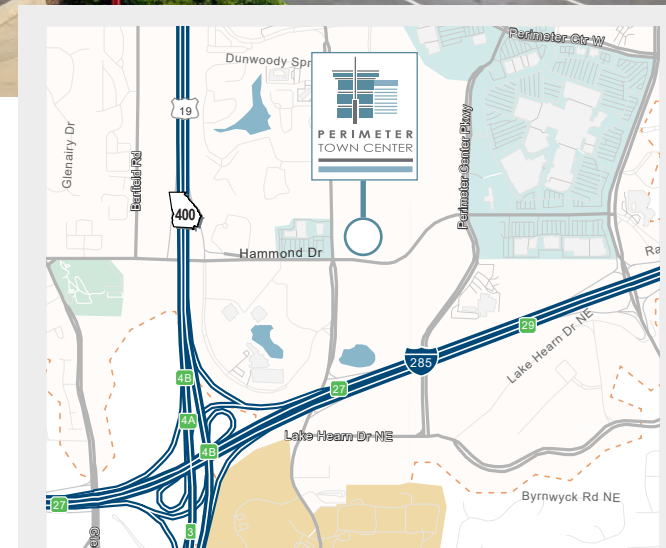
Ackerman & Co.

Medical/Dental/Research Space

6105-A Peachtree Dunwoody , Atlanta, GA 30328

HIGHLIGHTS

- Available:
 - **SUITE 200 - 4,302 RSF (First Generation)**
 - **SUITE 215 - 3,897 RSF**
- No hospital use restrictions
- Ample free surface and covered parking (4:1,000)
- Eight on-site restaurants and a gourmet coffee shop
- On-site management & building engineers
- 24-hour on-site manned security
- Exceptional ingress/egress
- 1/10th of a mile from Dunwoody rail station

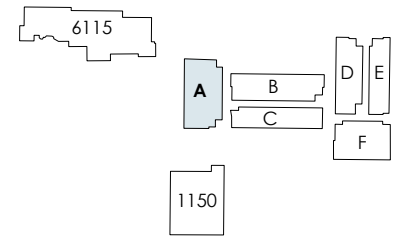


For Office Leasing, please contact
KEVIN EHRINGER
770.913.3960
kehringer@ackermanco.net

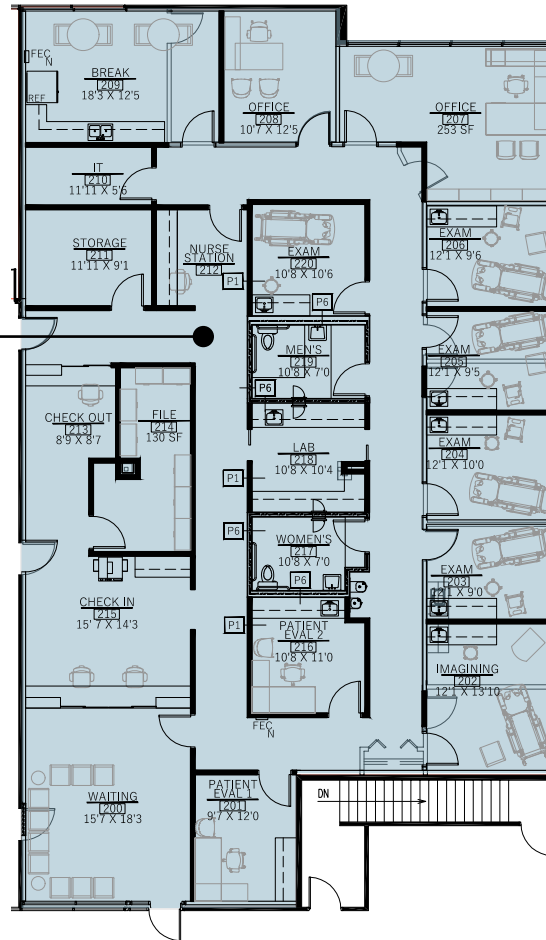
Ackerman & Co.

Building 6105 - A | Floor 2

6105 Peachtree Dunwoody Rd, Atlanta, GA 30328



Suite 200
4,302 RSF

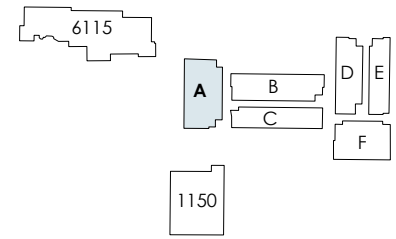


For Office Leasing, please contact
KEVIN EHRINGER
770.913.3960
kehringer@ackermanco.net

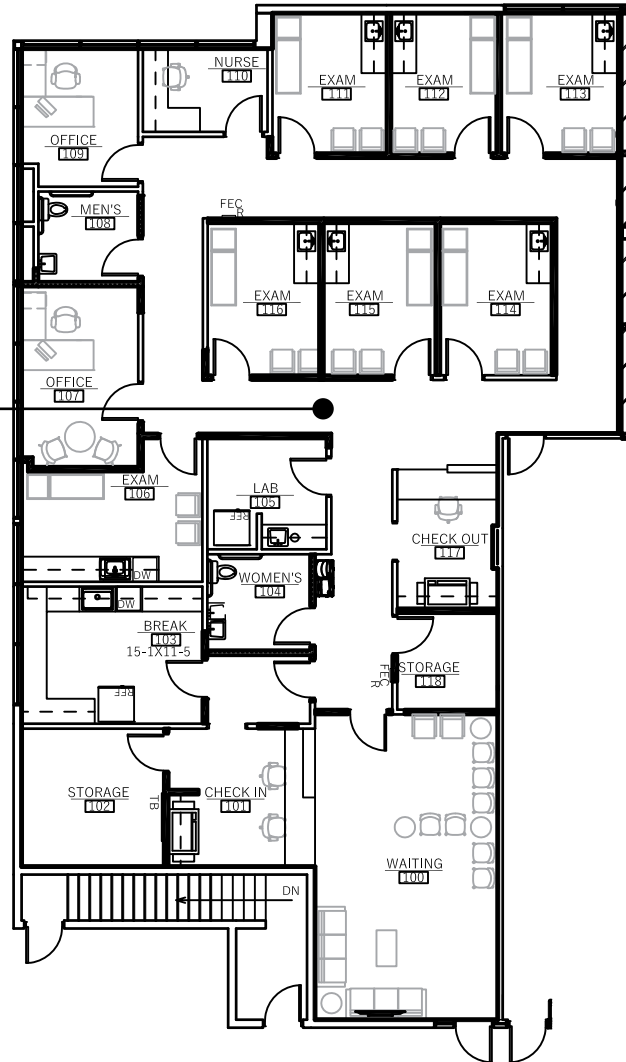
Ackerman & Co.

Building 6105 - A | Floor 2

6105 Peachtree Dunwoody Rd, Atlanta, GA 30328



Suite 215
3,897 RSF



For Office Leasing, please contact
KEVIN EHRINGER
770.913.3960
kehringer@ackermanco.net

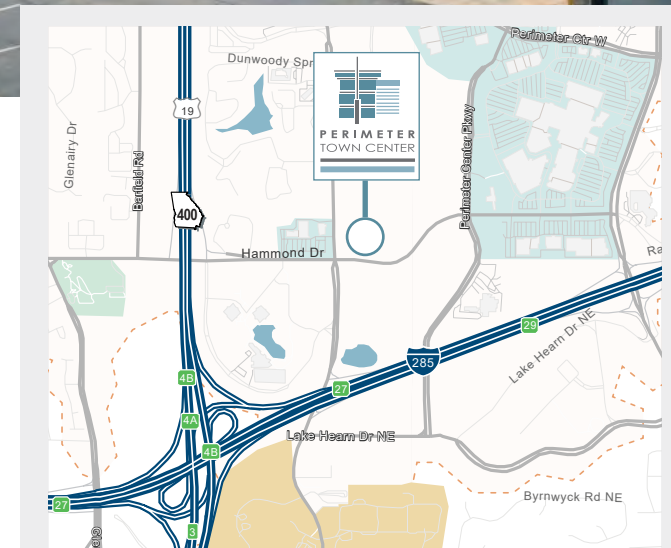
Ackerman & Co.

Medical Office/ Surgical Space

6105-B Peachtree Dunwoody, Atlanta, GA 30328

HIGHLIGHTS

- Available:
 - SUITE 110 - 11,645 RSF
 - SUITE 215, 225 - 5,012 RSF Contiguous (First Generation; Space)
 - SUITE 240 2,268 (First Generation)
- Former outpatient surgery center
- ASC with 5 operating rooms
- No hospital use restrictions
- 1/10th of a mile from Dunwoody rail station

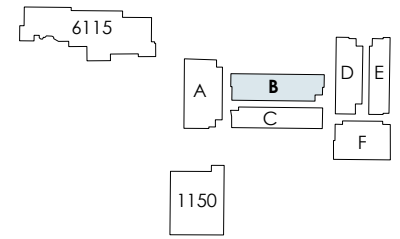


For Office Leasing, please contact
KEVIN EHRINGER
770.913.3960
kehringer@ackermanco.net

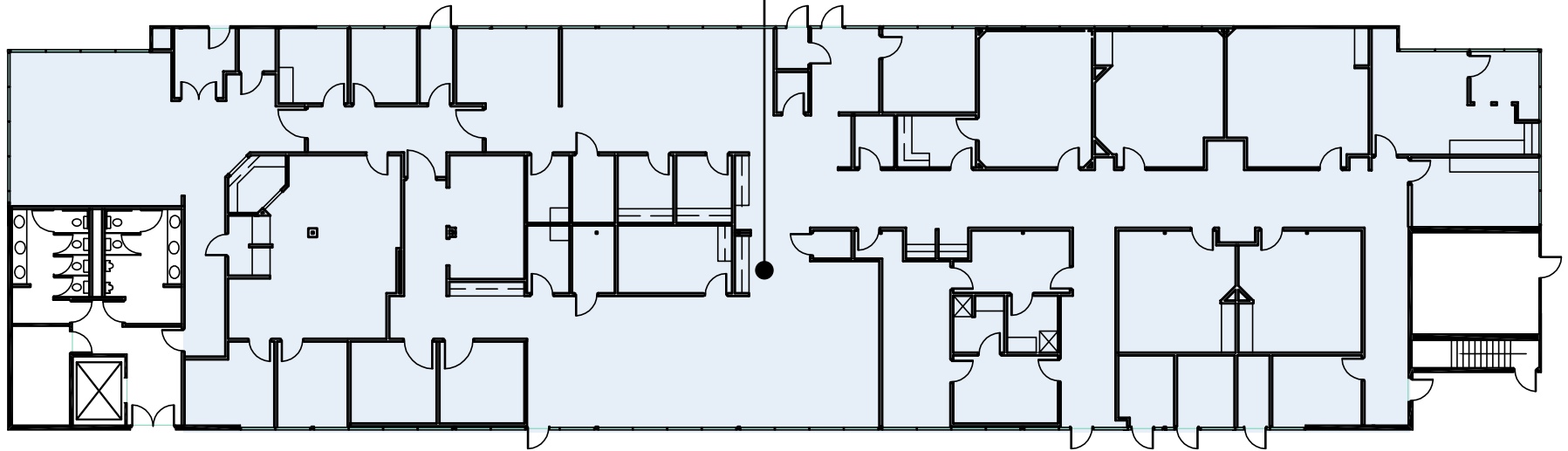
Ackerman & Co.

Building 6105 - B | Floor 1

6105 Peachtree Dunwoody Rd, Atlanta, GA 30328



Suite 110
11,645 RSF

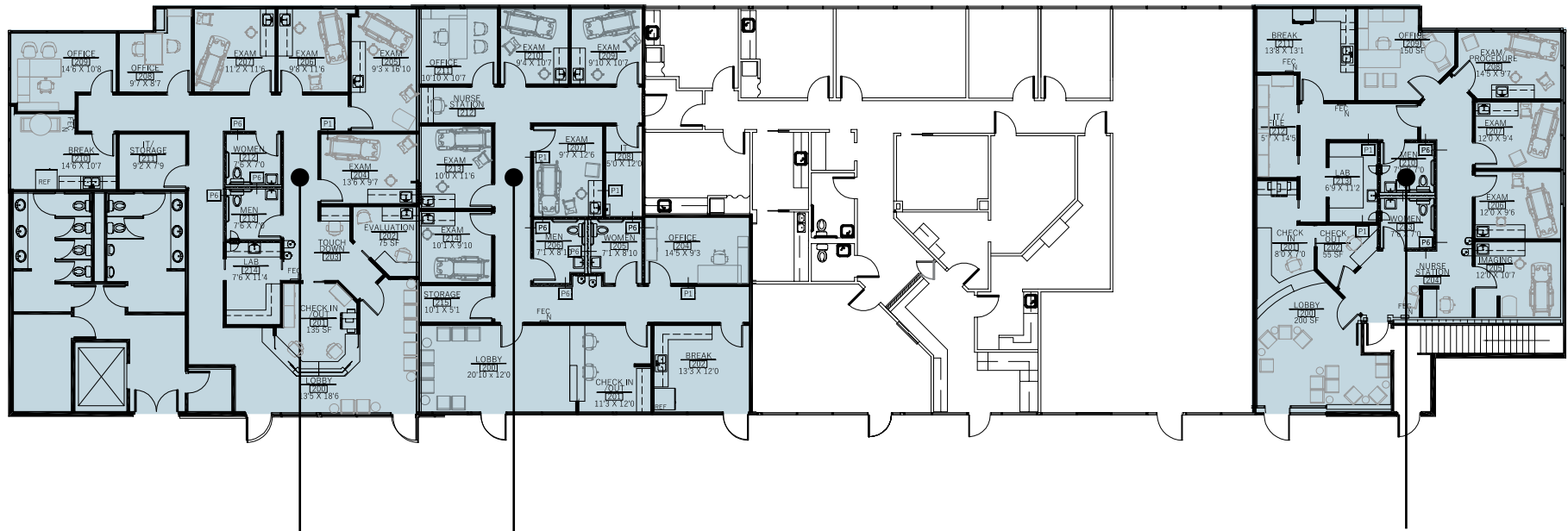
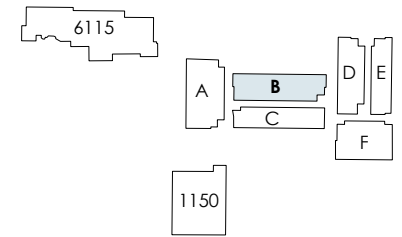


For Office Leasing, please contact
KEVIN EHRINGER
770.913.3960
kehringer@ackermanco.net

Ackerman & Co.

Building 6105 - B | Floor 2

6105 Peachtree Dunwoody Rd, Atlanta, GA 30328



Suite 215
2,565 RSF

Suite 225
2,450 RSF

Suite 240
2,268 RSF

Contiguous Space Available | 5,012 RSF



For Office Leasing, please contact
KEVIN EHRINGER
770.913.3960
kehringer@ackermanco.net

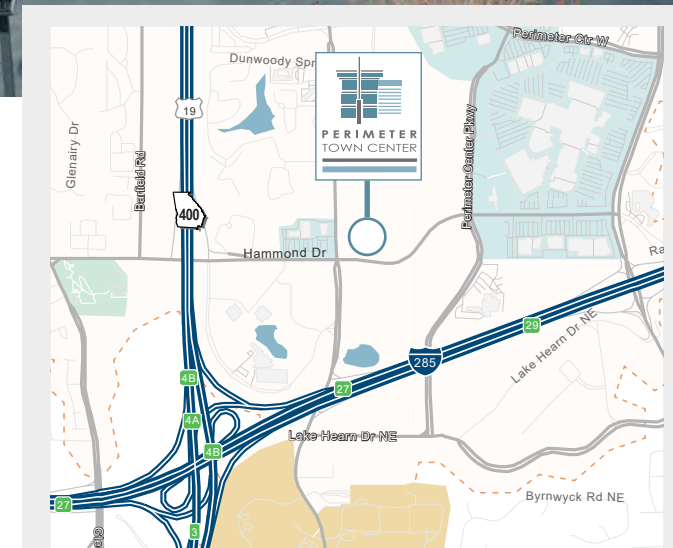
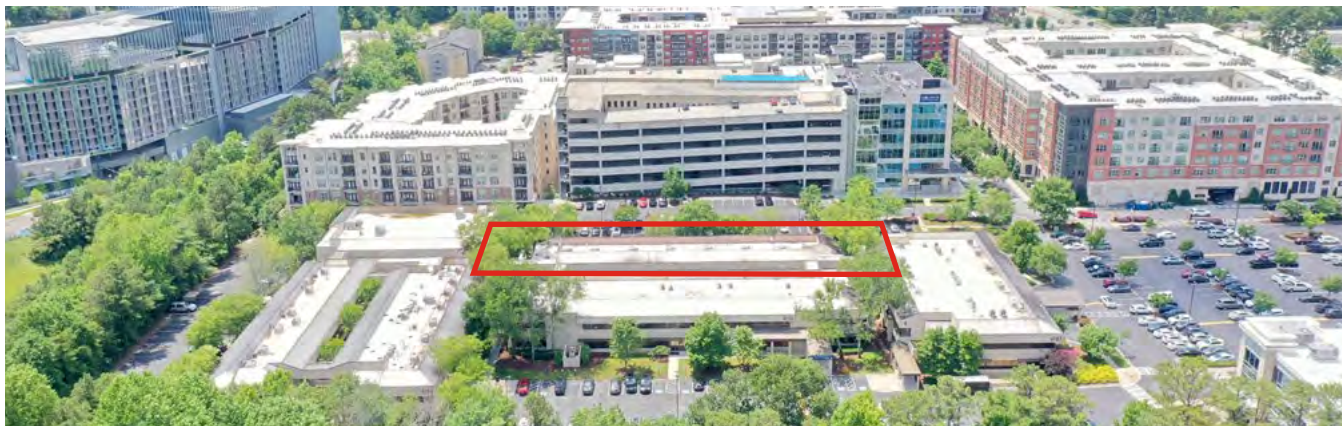
Ackerman & Co.

Medical Office

6105-C Peachtree Dunwoody Rd, Atlanta, GA 30328

HIGHLIGHTS

- Available:
 - **SUITE 250 - 2,234 RSF**
- New construction spec suite
- No hospital use restrictions
- Ample free surface and covered parking (4:1,000)
- Eight on-site restaurants and a gourmet coffee shop
- On-site management & building engineers
- 24-hour on-site manned security
- Exceptional ingress/egress
- 1/10th of a mile from Dunwoody rail station



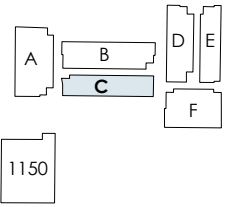
For Office Leasing, please contact
KEVIN EHRINGER
770.913.3960
kehringer@ackermanco.net

Ackerman & Co.

Building 6105 - C | Floor 2

6105 Peachtree Dunwoody Rd, Atlanta, GA 30328

6115



Suite 250
2,234 RSF



For Office Leasing, please contact
KEVIN EHRINGER
770.913.3960
kehringer@ackermanco.net

Ackerman & Co.

Building 6105 - C

6105 Peachtree Dunwoody Rd, Atlanta, GA 30328



PERIMETER
TOWN CENTER

For Office Leasing, please contact
KEVIN EHRINGER
770.913.3960
kehringer@ackermanco.net

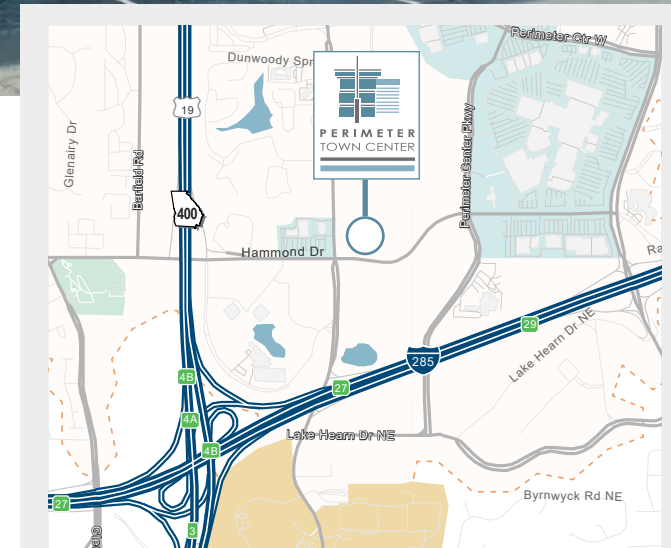
Ackerman & Co.

Medical Office

6105-D Peachtree Dunwoody Rd, Atlanta, GA 30328

HIGHLIGHTS

- Available:
 - **SUITE 135 - 9,950 RSF**
 - **SUITE 265 - 3,023 RSF (PARTIALLY BUILT OUT)**
 - **SUITE 275 - 3,155 RSF**
- No hospital use restrictions
- Ample free surface and covered parking (4:1,000)
- Eight on-site restaurants and a gourmet coffee shop
- On-site management & building engineers
- 24-hour on-site manned security
- Exceptional ingress/egress
- 1/10th of a mile from Dunwoody rail station

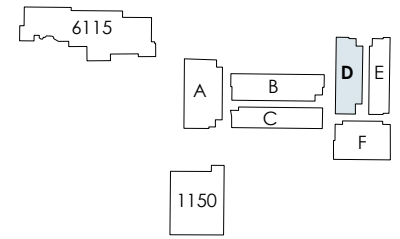


For Office Leasing, please contact
KEVIN EHRINGER
770.913.3960
kehringer@ackermanco.net

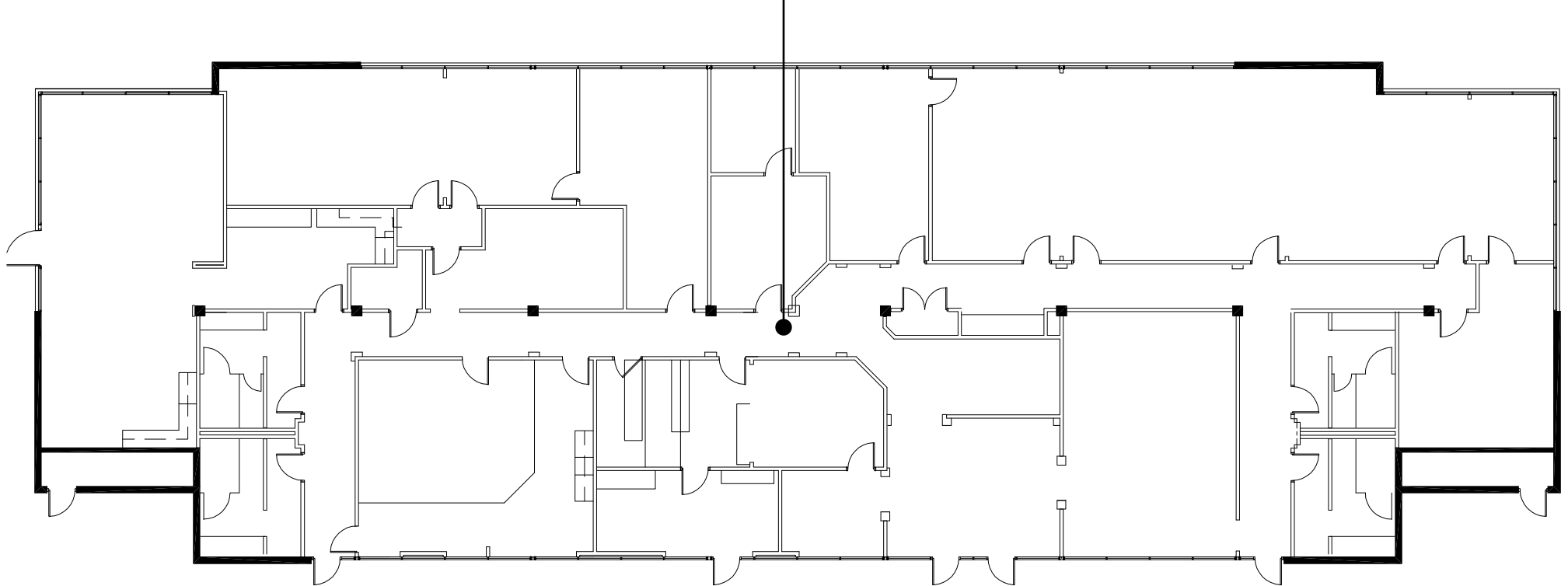
Ackerman & Co.

Building 6105 - D | Floor 1

6105 Peachtree Dunwoody Rd, Atlanta, GA 30328



Suite 135
9,950 RSF



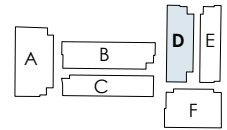
For Office Leasing, please contact
KEVIN EHRINGER
770.913.3960
kehringer@ackermanco.net

Ackerman & Co.

Building 6105 - D | Floor 2

6105 Peachtree Dunwoody Rd, Atlanta, GA 30328

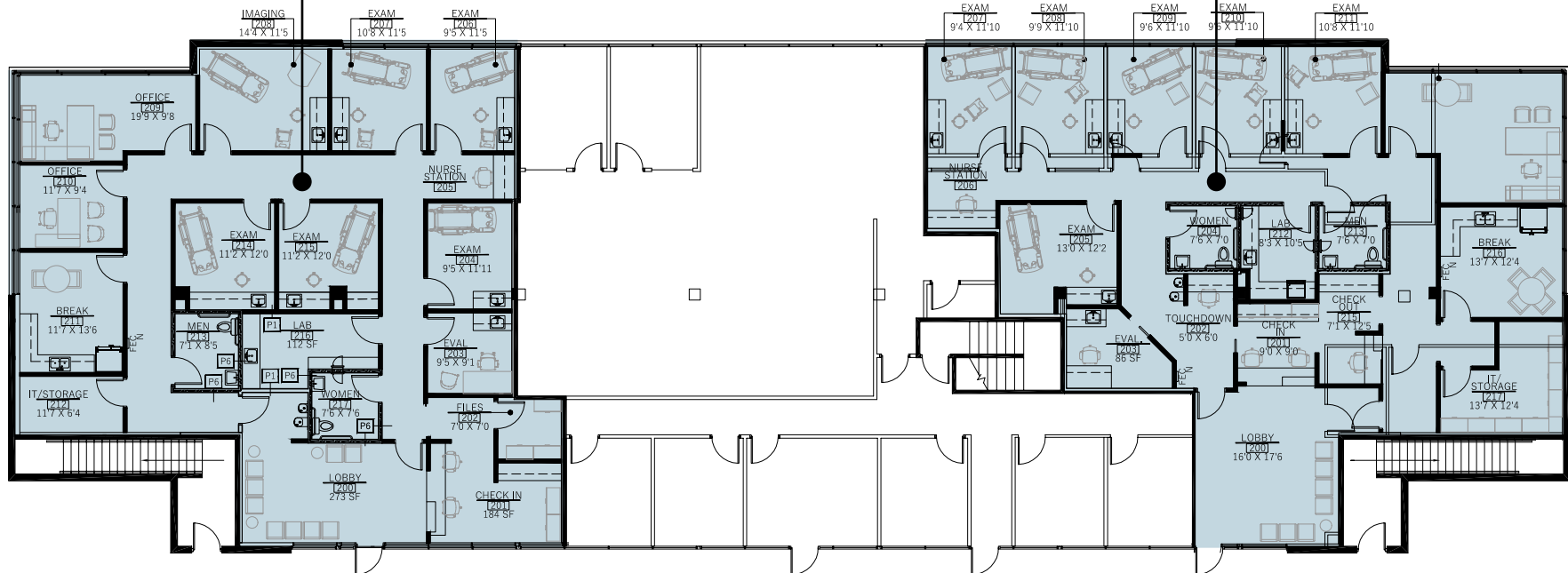
6115



1150

Suite 275
3,155 RSF

Suite 265
3,023 RSF



For Office Leasing, please contact
KEVIN EHRINGER
770.913.3960
kehringer@ackermanco.net

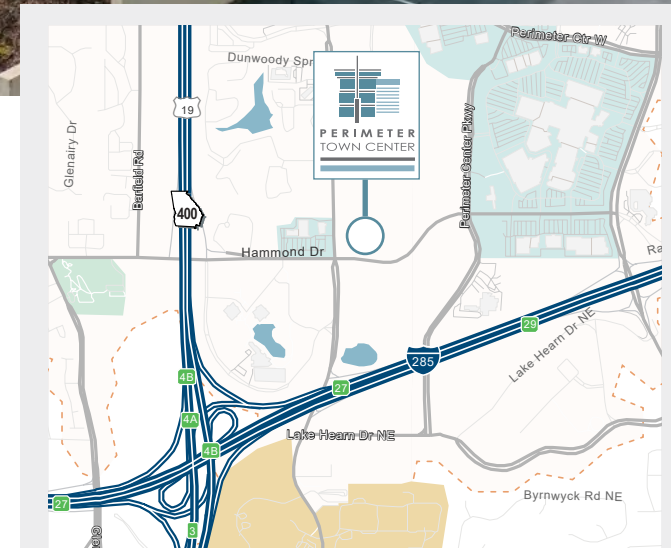
Ackerman & Co.

Medical Office

6105-E Peachtree Dunwoody Rd, Atlanta, GA 30328

HIGHLIGHTS

- Available:
 - **SUITE 290 - 3,161 RSF (FIRST GENERATION)**
 - **SUITE 285 - 2,083 RSF (FIRST GENERATION)**
- No hospital use restrictions
- Ample free surface and covered parking (4:1,000)
- Eight on-site restaurants and a gourmet coffee shop
- On-site management & building engineers
- 24-hour on-site manned security
- Exceptional ingress/egress
- 1/10th of a mile from Dunwoody rail station

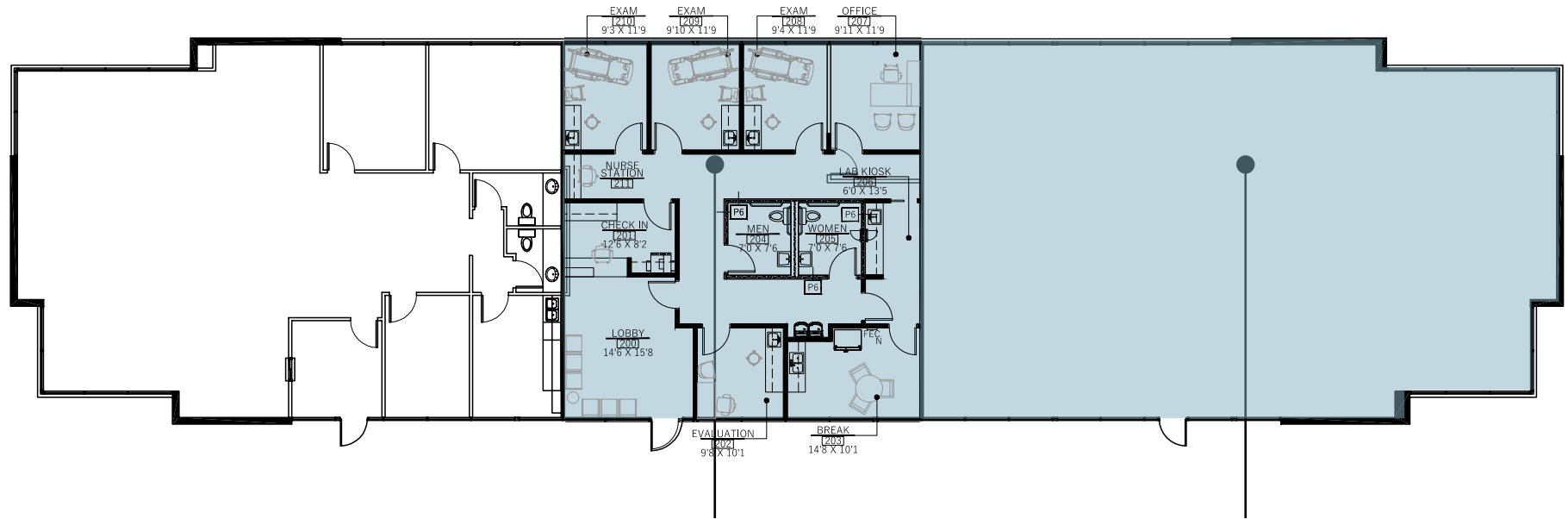
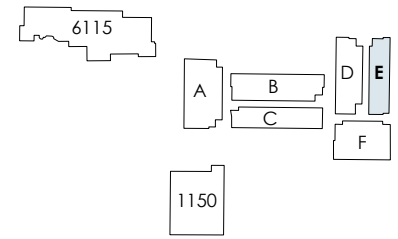


For Office Leasing, please contact
KEVIN EHRINGER
770.913.3960
kehringer@ackermanco.net

Ackerman & Co.

Building 6105 - E | Floor 2

6105 Peachtree Dunwoody Rd, Atlanta, GA 30328



Suite 285
2,083 RSF

Suite 290
3,161 RSF

Contiguous Space Available | 5,244 RSF



For Office Leasing, please contact
KEVIN EHRINGER
770.913.3960
kehringer@ackermanco.net

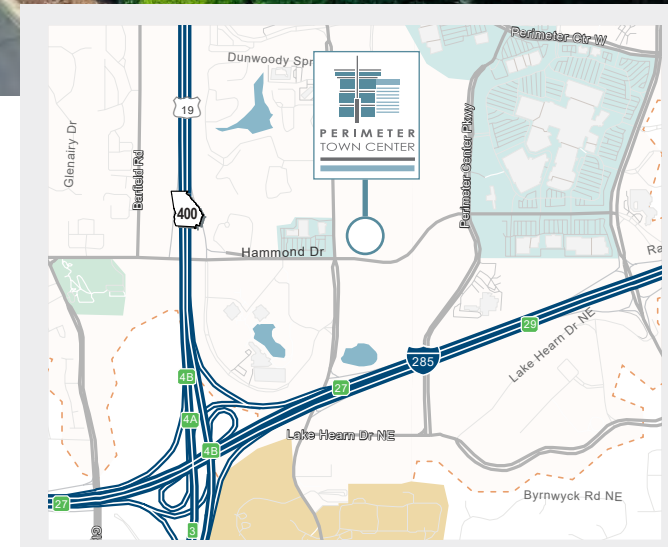
Ackerman & Co.

Medical Office

6105-F Peachtree Dunwoody Rd, Atlanta, GA 30328

HIGHLIGHTS

- Available:
 - **SUITE 295 - 11,198 RSF (FIRST GENERATION)**
- No hospital use restrictions
- Ample free surface and covered parking (4:1,000)
- Eight on-site restaurants and a gourmet coffee shop
- On-site management & building engineers
- 24-hour on-site manned security
- Exceptional ingress/egress
- 1/10th of a mile from Dunwoody rail station

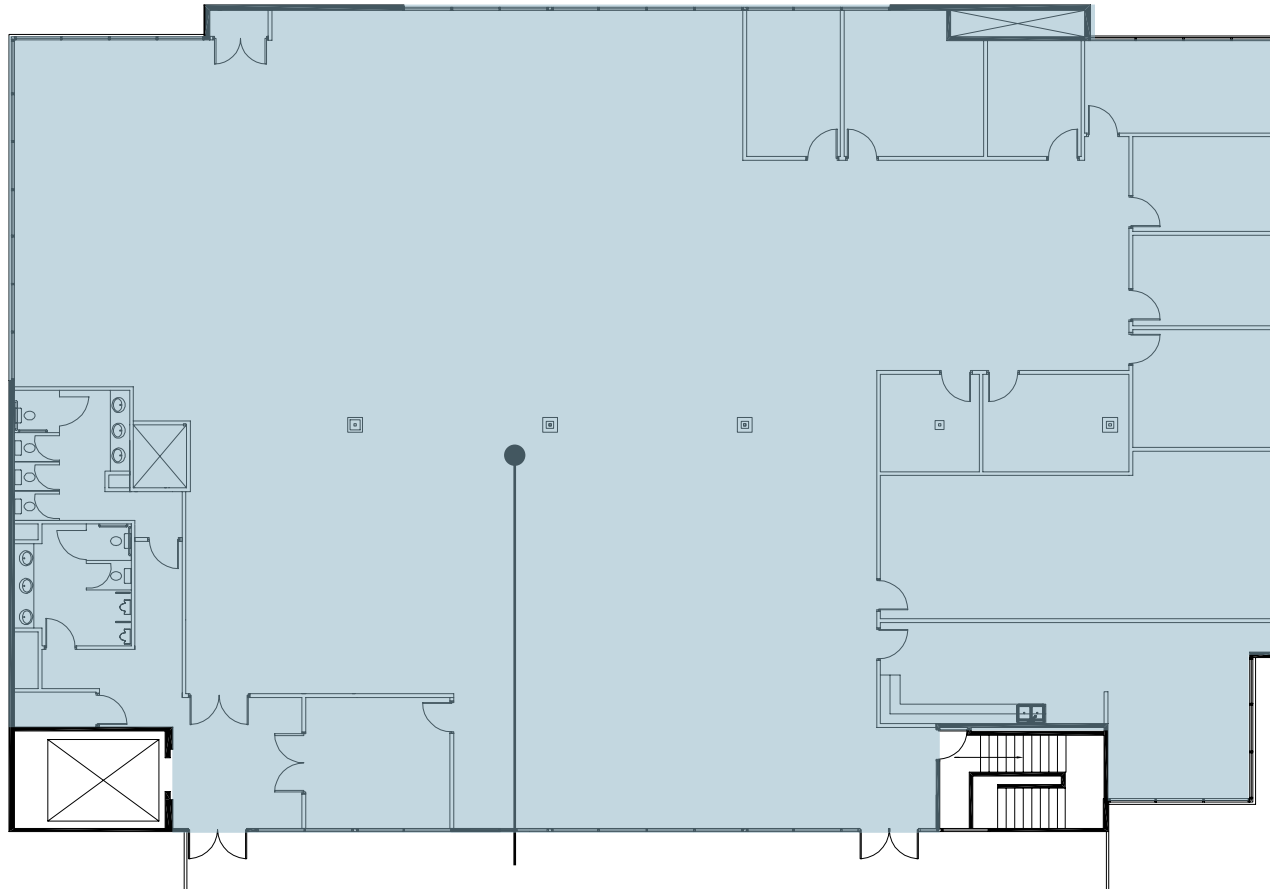
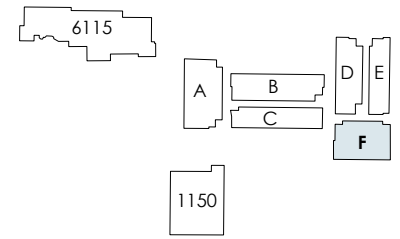


For Office Leasing, please contact
KEVIN EHRINGER
770.913.3960
kehringer@ackermanco.net

Ackerman & Co.

Building 6105 - F | Floor 2

6105 Peachtree Dunwoody Rd, Atlanta, GA 30328



Suite 295

11,198 RSF



For Office Leasing, please contact
KEVIN EHRINGER
770.913.3960
kehringer@ackermanco.net

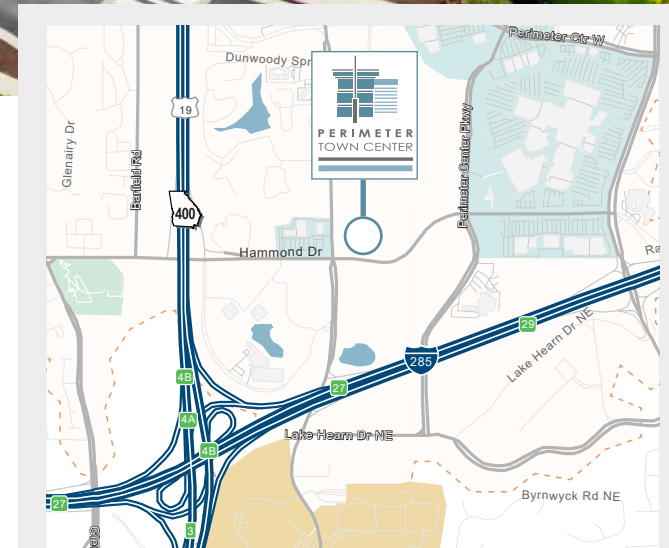
Ackerman & Co.

Street Level | Medical Retail

6115 Peachtree Dunwoody Rd, Atlanta, GA 30328

HIGHLIGHTS

- Available:
 - **SUITE 130 - 2,806 RSF**
- End-cap with patio space and separate covered rear access for surgical patient dropoff
- Perfectly suited for surgical suite, retail medical, or clinical space
- Ample free parking
- Signage available
- Updated exteriors and wayfinding
- Medical campus setting with a variety of specialties & health systems represented
- No hospital use restrictions



For Retail Leasing, please contact
COURTNEY BRUMBELOW
770.913.3905
cbrumbelow@ackermanco.net

Ackerman & Co.



Demographics

	1-MILE	3-MILE	5-MILE
POPULATION	13,296	110,939	253,743
HOUSEHOLDS	7,270	50,834	112,744
AVG HH INCOME	\$151,807	\$179,241	\$193,161

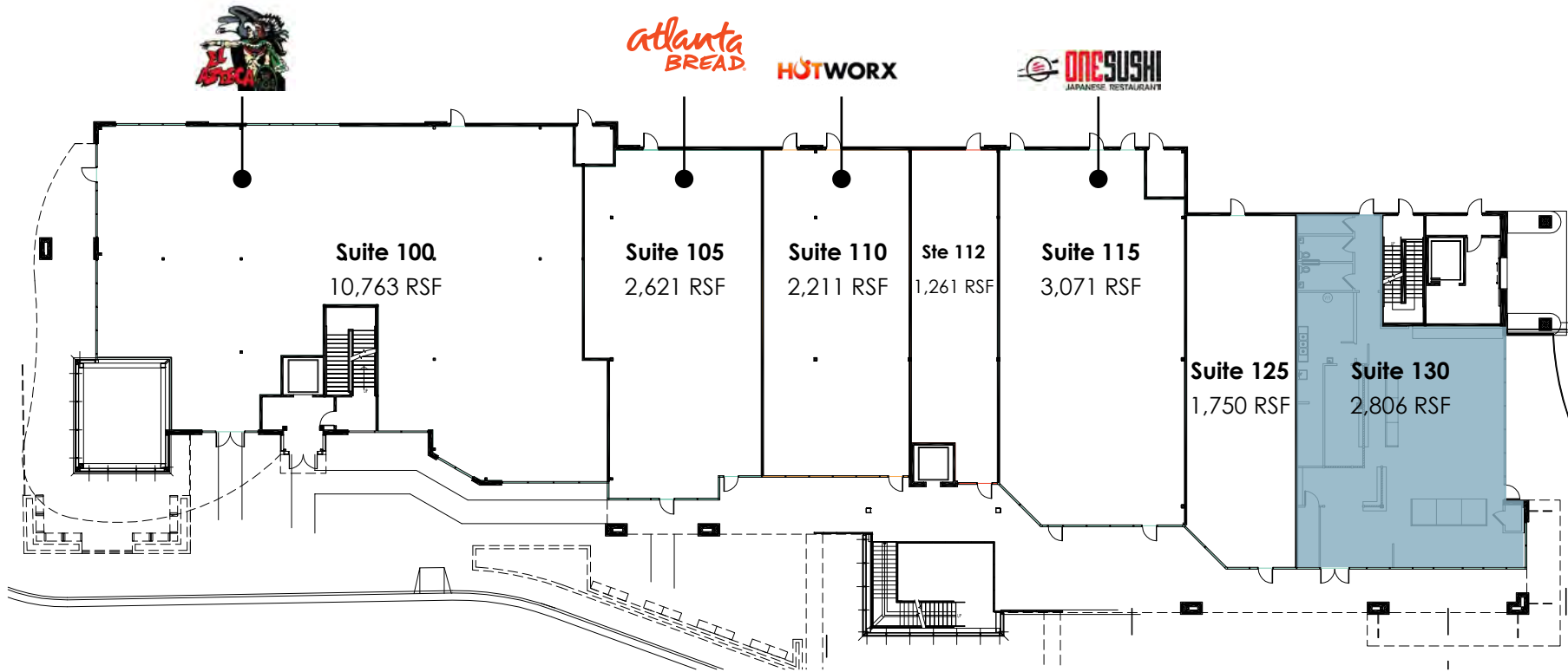
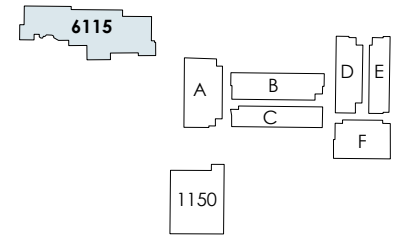


For Retail Leasing, please contact
COURTNEY BRUMBELOW
 770.913.3905
 cbrumbelow@ackermanco.net

Ackerman & Co.

Street Level | Medical Retail

6115 Peachtree Dunwoody Rd, Atlanta, GA 30328



For Retail Leasing, please contact
COURTNEY BRUMBELOW
770.913.3905
cbrumbelow@ackermanco.net

Ackerman & Co.