

Oxford Exchange

501 Oxford Exchange | Oxford, AL 36203

Ackerman Retail

**DELIVERY
SPRING 2019!**



PROPERTY HIGHLIGHTS

- Available: 1,800 SF, located on an outparcel at Oxford Exchange
- Join Chicken Salad Chick and Five Guys
- Oxford Exchange serves as a major retail node between Atlanta and Birmingham
- Area retailers include: Target, Sam's Club, The Home Depot, Kohl's, Dick's Sporting Goods, Hobby Lobby, Bed Bath & Beyond, TJ Maxx and more
- Traffic Count: 34,210 AADT (Leon Smith Parkway), 42,080 AADT (Interstate 20)

LEASING CONTACT:

COURTNEY BRUMBELOW
770.913.3905
cbrumbelow@ackermanco.net
www.ackermanretail.com

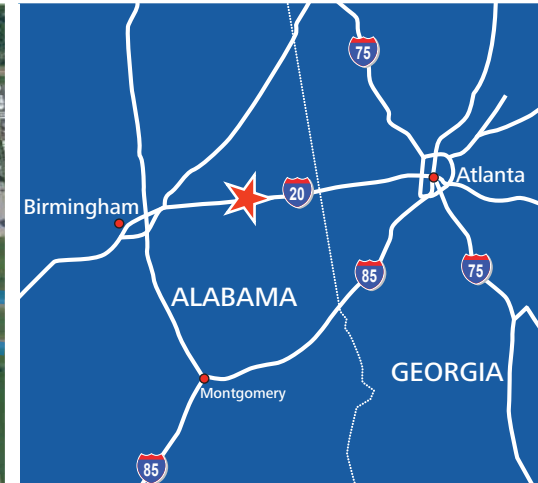
Oxford Exchange

501 Oxford Exchange | Oxford, AL 36203



CHOCOLOCCO PARK
 300+ acre one-of-a-kind, state-of-the-art sports complex that includes baseball, softball, track & field, cross country, and soccer amenities, along with educational, walking & biking trails, all-encompassing playgrounds, water & natural resources.

Ackerman Retail



AREA DEMOGRAPHICS (2018):



POPULATION

1-MILE	323
3-MILE	15,682
5-MILE	33,367



HOUSEHOLDS

1-MILE	152
3-MILE	7,105
5-MILE	14,610

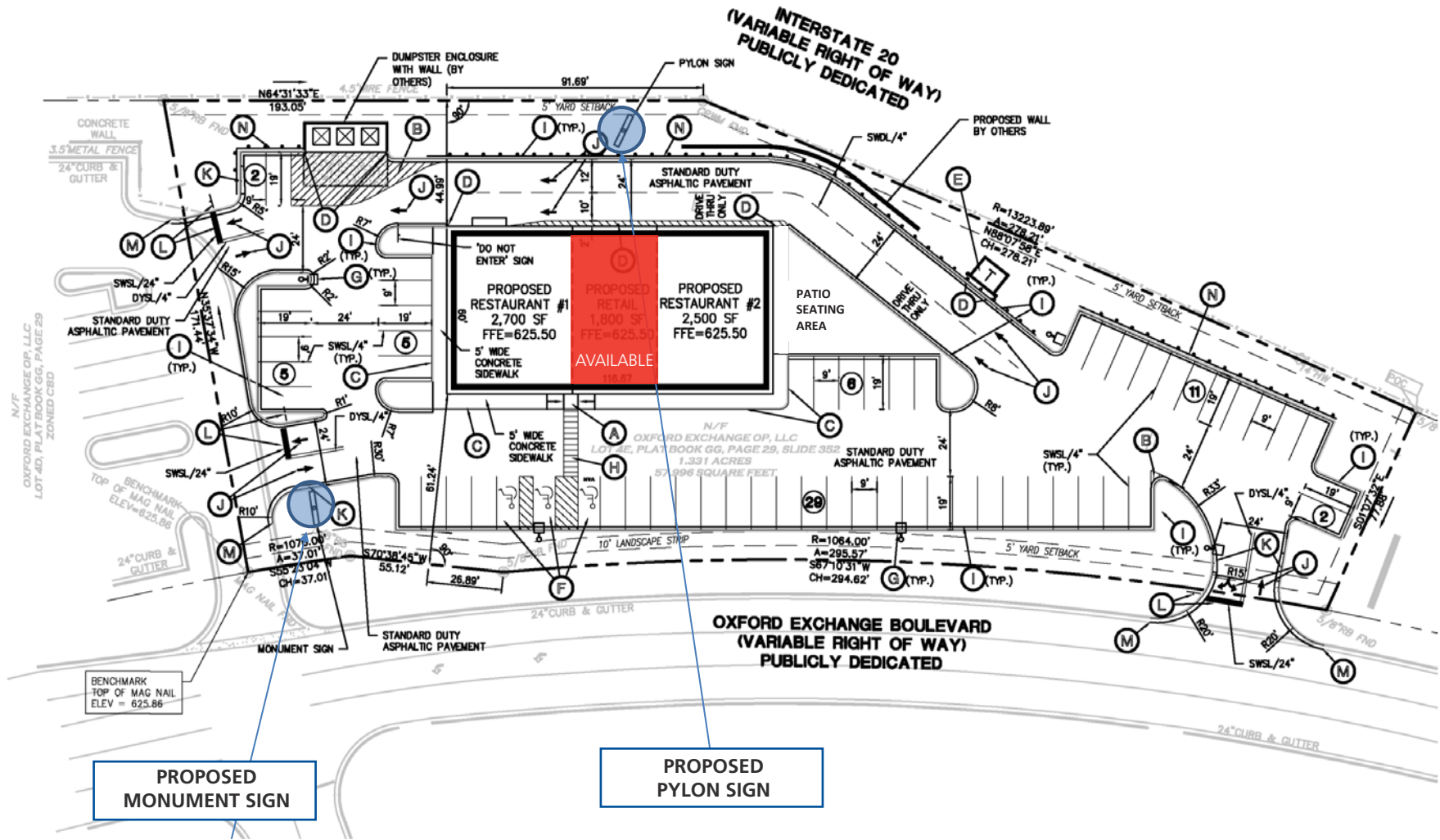


AVG HH INCOME

1-MILE	\$77,180
3-MILE	\$77,921
5-MILE	\$66,116

LEASING CONTACT:

COURTNEY BRUMBELOW
 770.913.3905
 cbrumbelow@ackermanco.net
 www.ackermanretail.com



LEASING CONTACT:

COURTNEY BRUMBELOW

770.913.3905 | cbrumbelow@ackermanco.net

www.ackermanretail.com