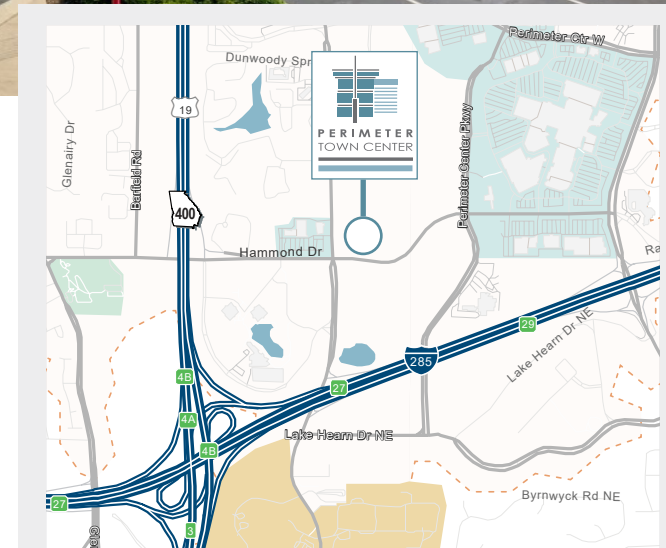


Medical/Dental/Research Space

6105-A Peachtree Dunwoody , Atlanta, GA 30328

HIGHLIGHTS

- Available:
 - **SUITE 200 - 4,302 RSF (First Generation)**
 - **SUITE 215 - 3,897 RSF**
- No hospital use restrictions
- Ample free surface and covered parking (4:1,000)
- Eight on-site restaurants and a gourmet coffee shop
- On-site management & building engineers
- 24-hour on-site manned security
- Exceptional ingress/egress
- 1/10th of a mile from Dunwoody rail station



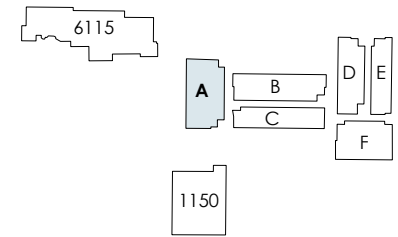
For Office Leasing, please contact
LARRY JAREMA
770.913.3954
ljarema@ackermanco.net

FRANK FARRELL
770.913.3948
ffarrell@ackermanco.net

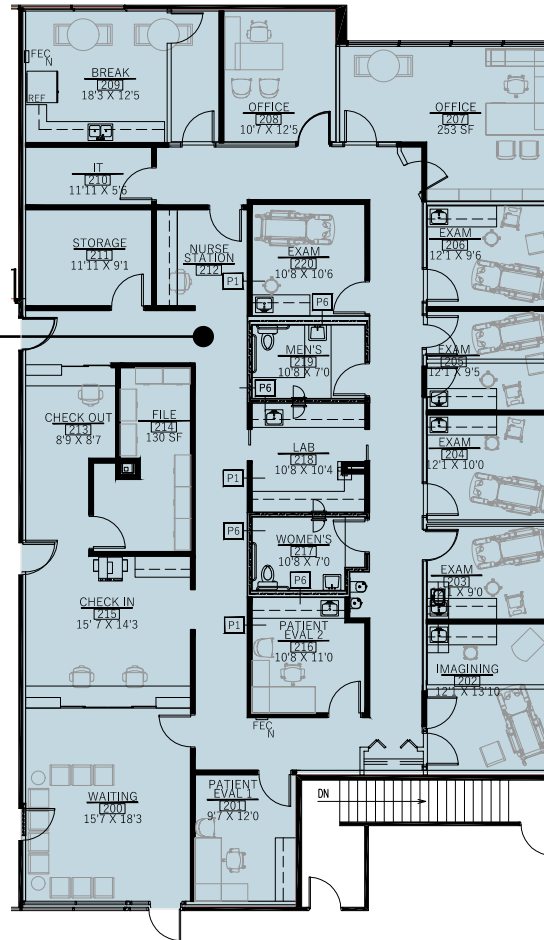
Ackerman & Co.

Building 6105 - A | Floor 2

6105 Peachtree Dunwoody Rd, Atlanta, GA 30328



Suite 200
4,302 RSF



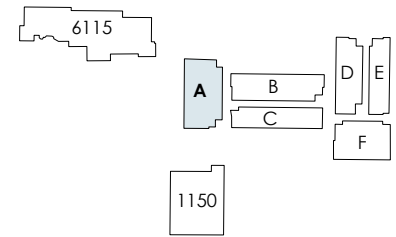
For Office Leasing, please contact
FRANK FARRELL
770.913.3948
ffarrell@ackermanco.net

LARRY JAREMA
770.913.3954
ljarema@ackermanco.net

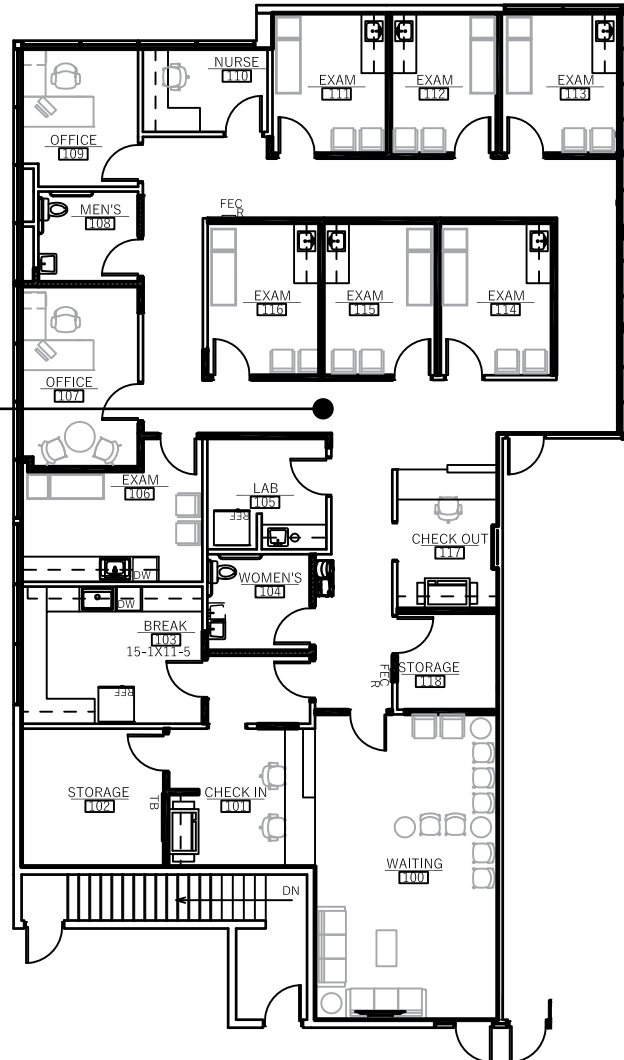
Ackerman & Co.

Building 6105 - A | Floor 2

6105 Peachtree Dunwoody Rd, Atlanta, GA 30328



Suite 215
3,897 RSF



For Office Leasing, please contact
FRANK FARRELL
770.913.3948
ffarrell@ackermanco.net

LARRY JAREMA
770.913.3954
ljarema@ackermanco.net

Ackerman & Co.