

2,500 - 10,080 SF AVAILABLE SPACE

1023 & 1025 Barrow Industrial Pkwy

Winder, GA 30680 | Barrow County

Property Highlights

- 10,080 SF building (sub-dividable)
- 15% office buildout
- Great signage & easy access from Barrow Industrial Pkwy
- 14' clear height
- 3 Drive-in doors
- Convenient front and rear parking
- Adjacent 5.3 acres available separately



Building Size:	10,080 SF
Zoning:	M-2 (heavy Industrial)
Construction:	Pre-engineered metal with brick veneer
Clear Height:	14'
Loading Type:	Rear load
Dock Doors:	1
Drive-in Doors:	3
Building Dimensions:	160'x63'
Truck Court Depth:	90'
Parking:	auto - 93 trailer - 0
Fire Protection:	Sprinkler system
Warehouse Lighting:	Flourescent
Roof Type:	Metal
Roof Installed:	2006



2,500 - 10,080 SF AVAILABLE SPACE

1023 & 1025 Barrow Industrial Parkway
Winder, GA 30680 | Barrow County



316

UNIVERSITY PKWY

29

KILCREASE RD

chico's

BARROW INDUSTRIAL PKWY

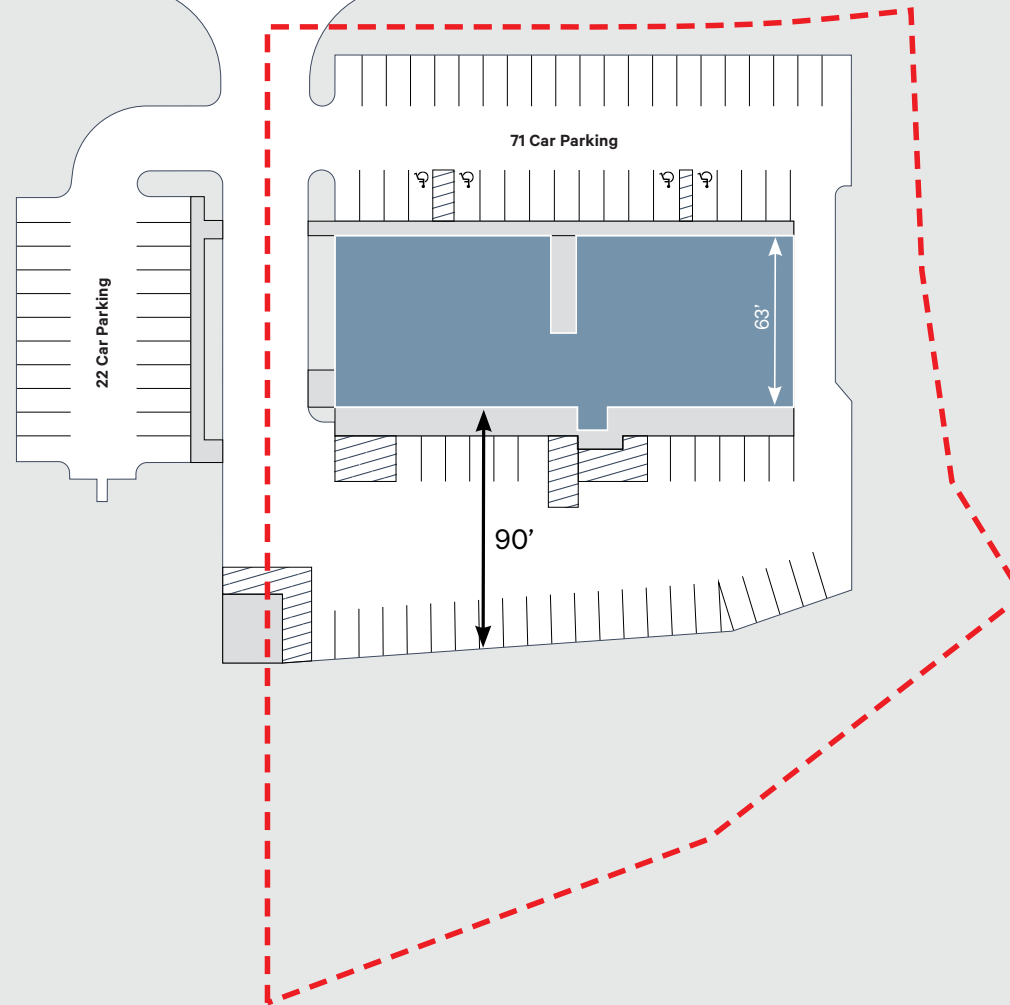
ADDITIONAL LAND
NOT INCLUDED
5.3 ACRES

2,500 - 10,080 SF AVAILABLE SPACE

1023 & 1025 Barrow Industrial Parkway
Winder, GA 30680 | Barrow County



BARROW INDUSTRIAL PKWY



5.3 ACRES | 43,200 SF BUILD-TO-SUIT

1021 Barrow Industrial Parkway
Winder, GA 30680 | Barrow County


BARROW 316
INDUSTRIAL PARK



BRETT BUCKNER | 770.913.3923 | bbuckner@ackermanco.net

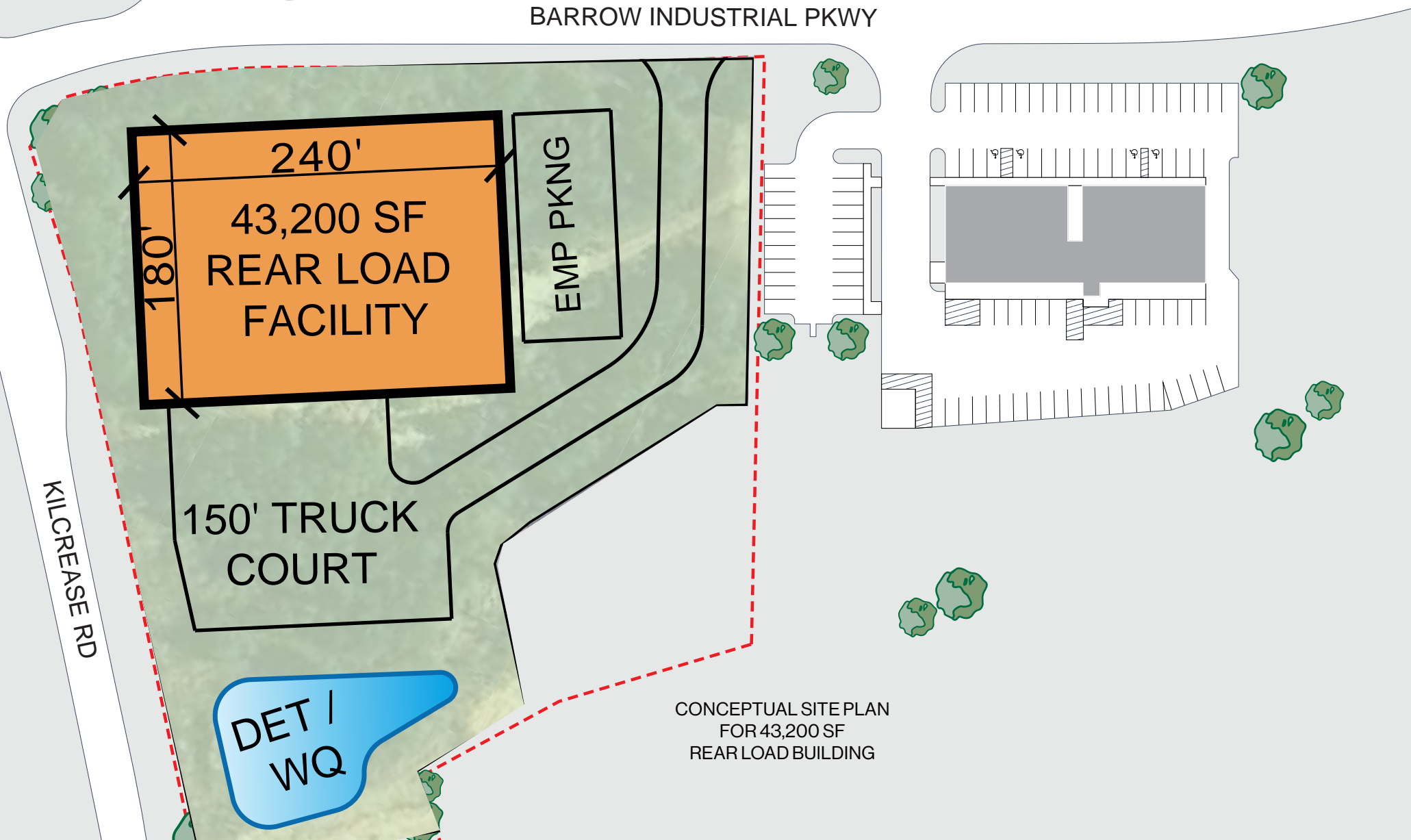
CHRIS MILLER | 770.913.3989 | cmiller@ackermanco.net

Ackerman & Co.

©2024 Ackerman & Co. All rights reserved. While we have no reason to doubt the accuracy of the information provided from sources we deem reliable, we cannot guarantee it and therefore assume no liability for errors, omissions or changes to this content.

5.3 ACRES | 43,200 SF BUILD-TO-SUIT

1021 Barrow Industrial Parkway
Winder, GA 30680 | Barrow County





**BARROW 316
INDUSTRIAL PARK**

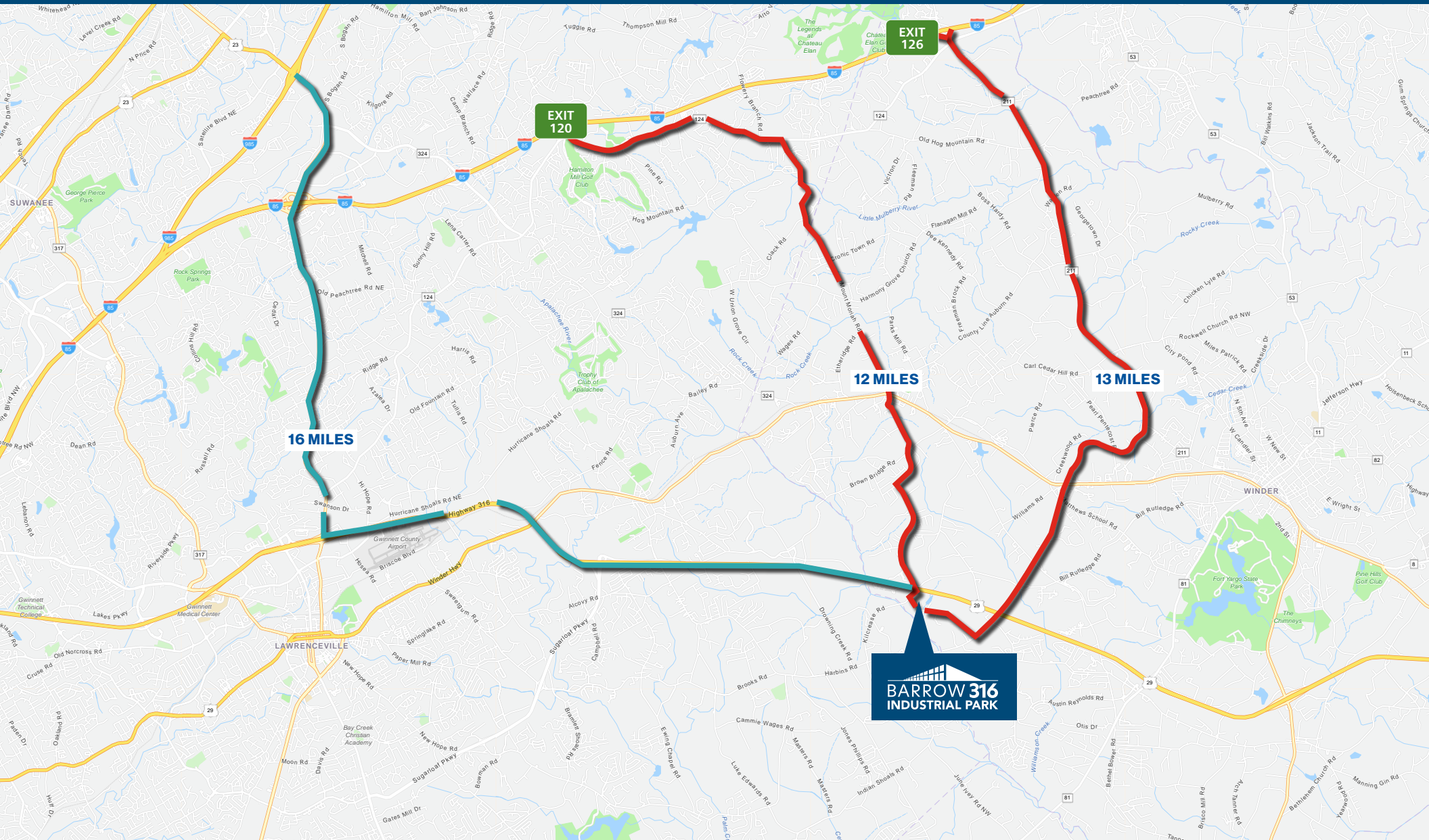
Distribution | Warehouse

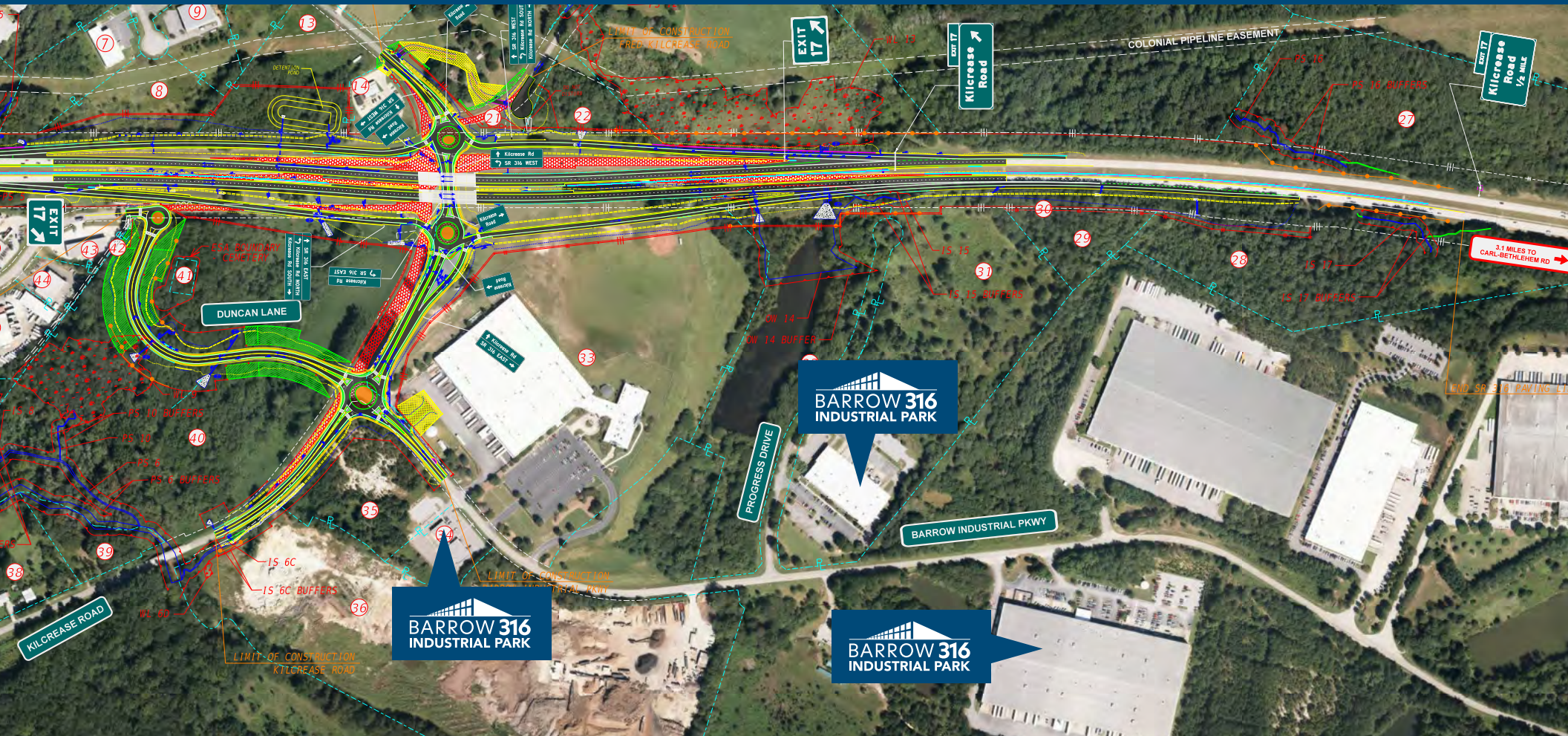
Available for Lease • Build-to-Suit • Sale

2,500 - 500,000 SF









The proposed SR 316 at Kilcrease Road Reconstruction project (P.I. No. 0013902) is part of a series of roadway improvement projects along SR 316 from SR 20 in Gwinnett County to SR 10 in Athens, Oconee County. The proposed improvements near the vicinity of SR 316 at Kilcrease Road include:

- Reconstruct the existing signalized, at-grade crossing at SR 316 and Kilcrease Road to a grade-separated interchange.