

# 20,000 - 49,557 SF AVAILABLE SPACE

## 815 Progress Drive

Winder, GA 30680 | Barrow County

### Property Highlights

- 49,557 SF building (sub-dividable)
- 100% climate controlled
- Excellent opportunity for showroom and office with rear warehouse/ production space
- 22' clear height
- 5 Dock / 2 Drive-in doors
- Ample parking spaces
- Adjacent 11.8± acres available separately



**BARROW 316**  
**INDUSTRIAL PARK**

Building Size:	49,557 SF
Zoning:	M-2 (heavy Industrial)
Construction:	Concrete walls & pres-engineered structure
Clear Height:	22'
Loading Type:	Rear load
Dock Doors:	5
Drive-in Doors:	2
Building Dimensions:	307'x161'
Truck Court Depth:	95'
Parking:	auto - 222 trailer - 3
Fire Protection:	Sprinkler system
Power:	4,000 amps
Roof Type:	Rubber membrane



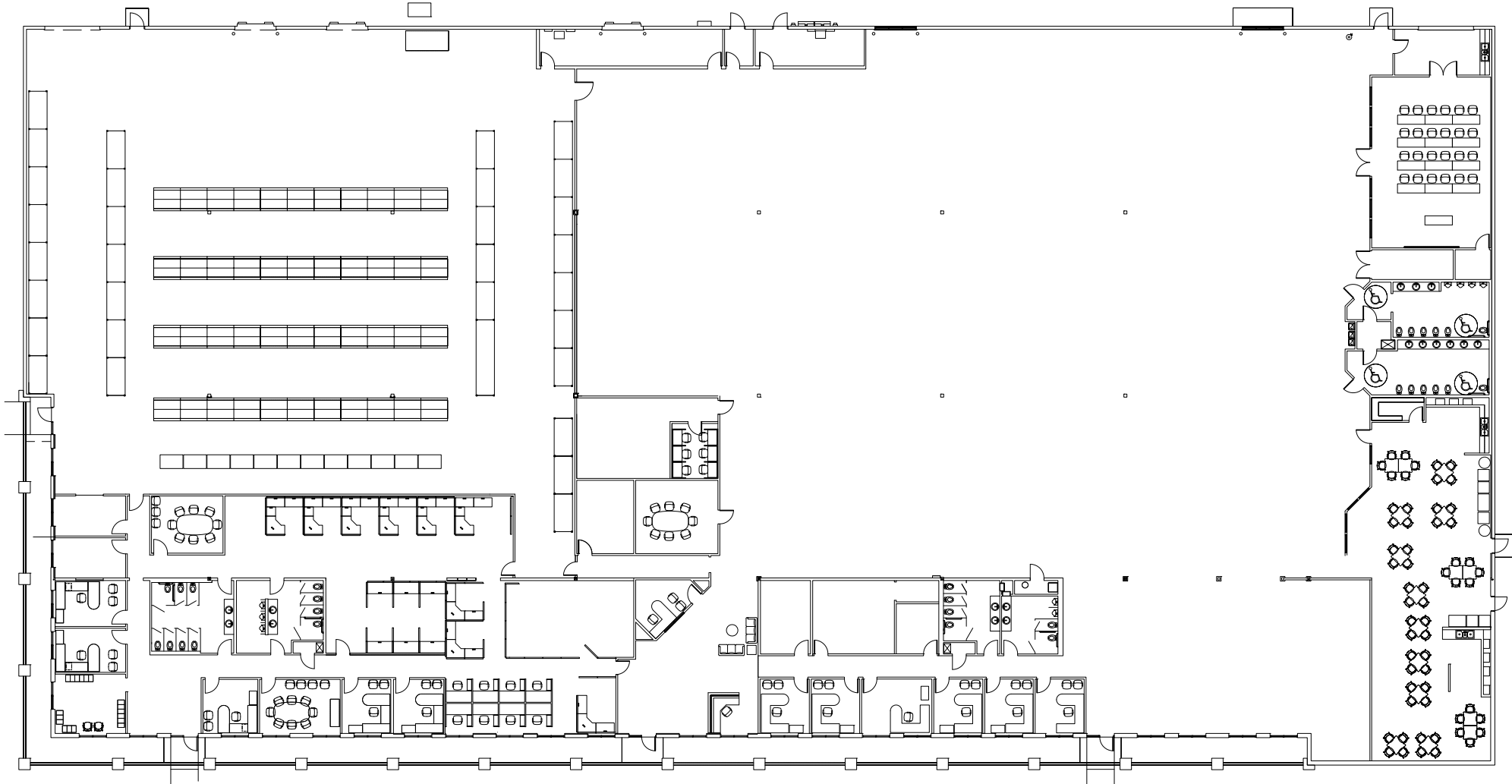
# 20,000 - 49,557 SF AVAILABLE SPACE

815 Progress Drive  
Winder, GA 30680 | Barrow County



# 20,000 - 49,557 SF AVAILABLE SPACE

815 Progress Drive  
Winder, GA 30680 | Barrow County



# 11.8± ACRES | 140,000 SF BUILD-TO-SUIT

817 Progress Drive  
Winder, GA 30680 | Barrow County

  
**BARROW 316  
INDUSTRIAL PARK**



chico's

29

UNIVERSITY PKWY

316

PROGRESS DR

14.5± ACRES

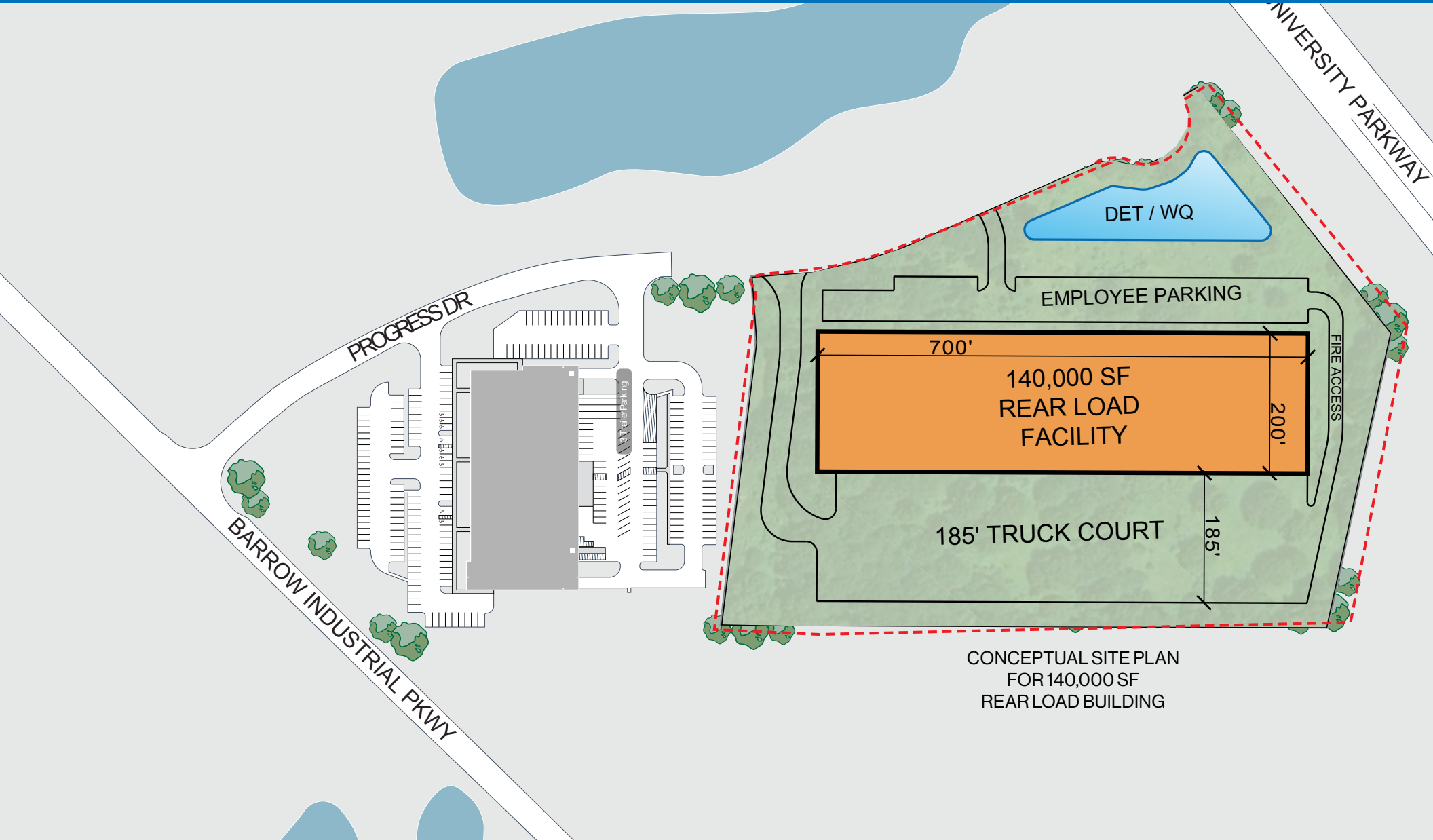
BARROW INDUSTRIAL PKWY

 **YOKOHAMA**

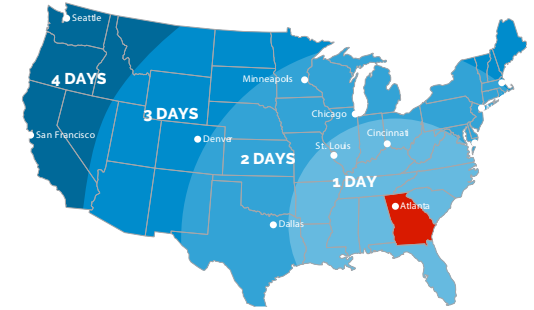
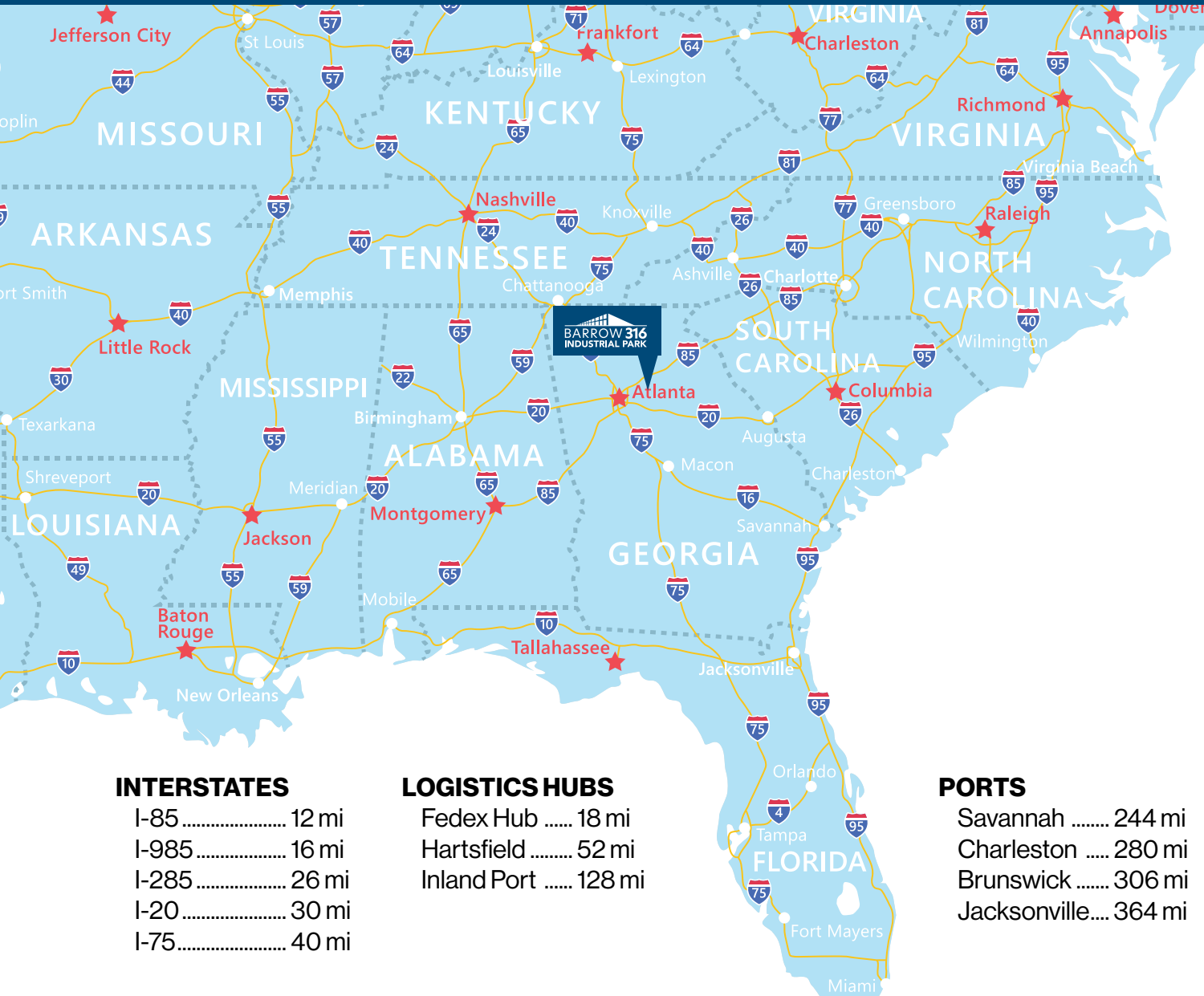
# 11.8± ACRES | 140,000 SF BUILD-TO-SUIT

817 Progress Drive  
Winder, GA 30680 | Barrow County

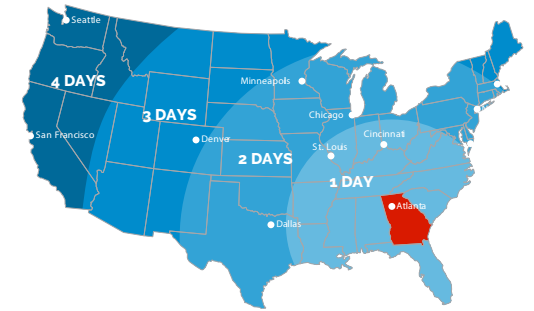
**BARROW 316  
INDUSTRIAL PARK**



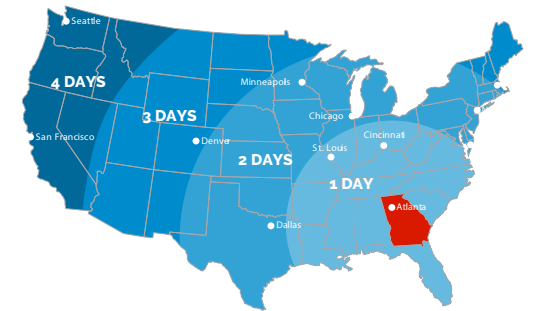
CONCEPTUAL SITE PLAN  
FOR 140,000 SF  
REAR LOAD BUILDING



**AIR TRANSIT TIMES  
FROM GEORGIA**



**TRUCK TRANSIT TIMES  
FROM GEORGIA**



**RAIL TRANSIT TIMES  
FROM GEORGIA**



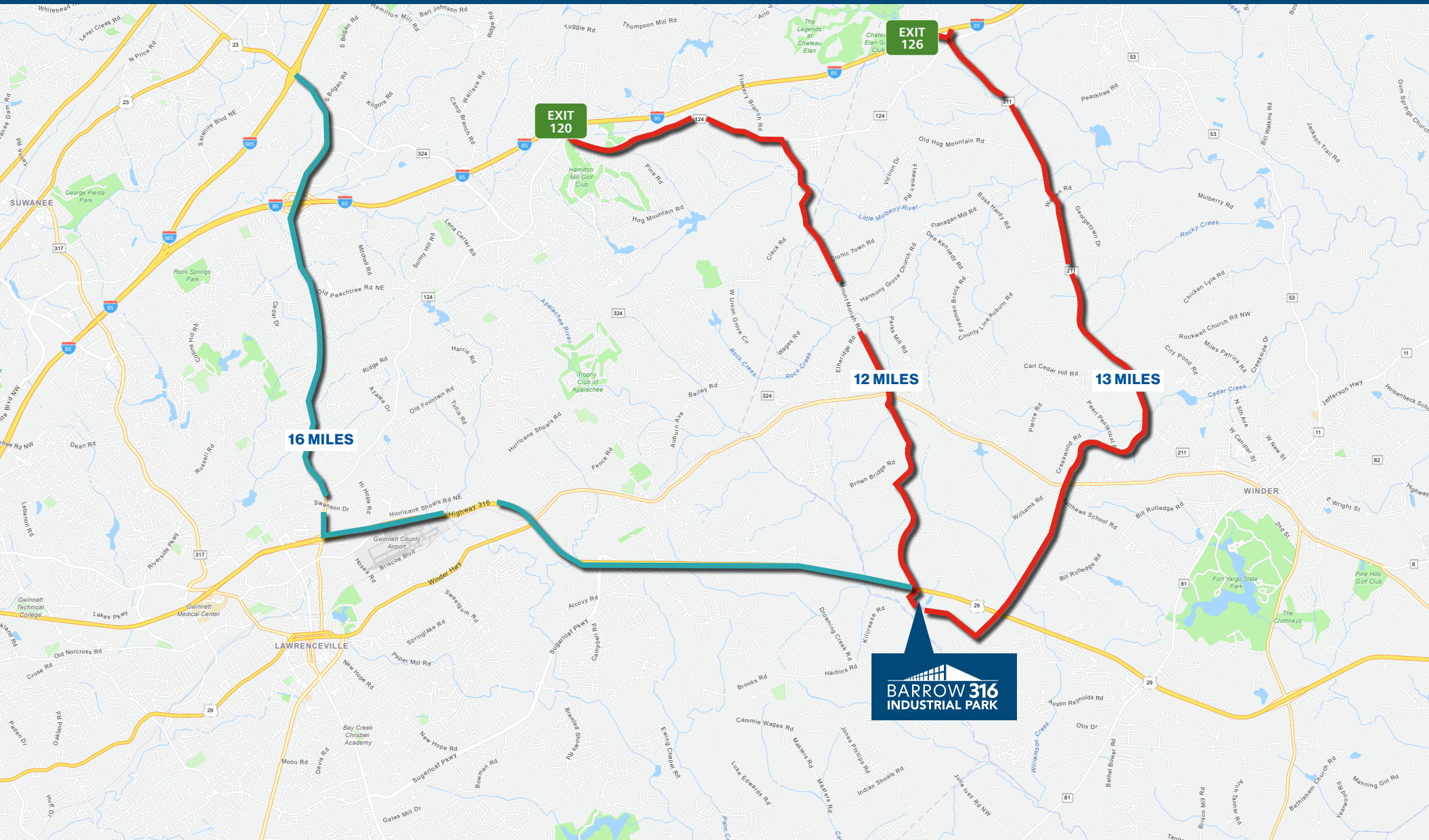
**BARROW 316  
INDUSTRIAL PARK**

# Distribution | Warehouse

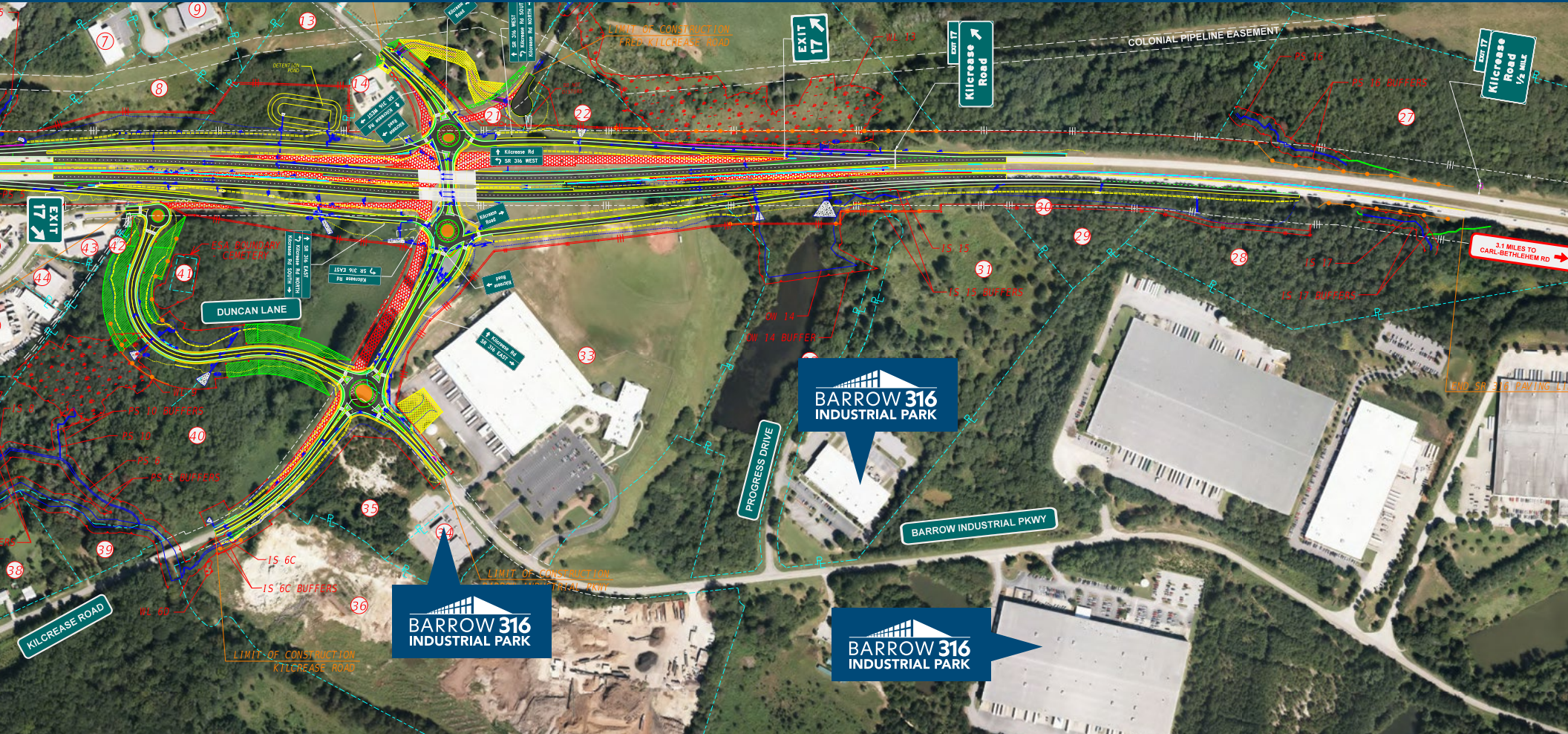
Available for Lease • Build-to-Suit • Sale

**2,500 - 500,000 SF**









The proposed SR 316 at Kilcrease Road Reconstruction project (P.I. No. 0013902) is part of a series of roadway improvement projects along SR 316 from SR 20 in Gwinnett County to SR 10 in Athens, Oconee County. The proposed improvements near the vicinity of SR 316 at Kilcrease Road include:

- Reconstruct the existing signalized, at-grade crossing at SR 316 and Kilcrease Road to a grade-separated interchange.